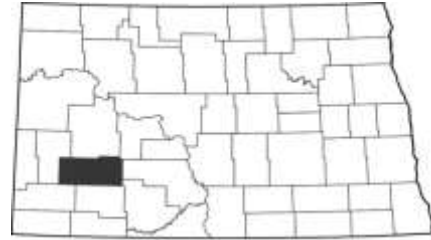


# STARK COUNTY AREA PROFILE

Stark County's 2019 resident population was 31,489, a one-year numeric change of +596 or a change of +1.9 percent. The unemployment rate for Stark County in September 2020 was 6.2 percent. One year prior, the unemployment rate was 1.7 percent. There were 515 job openings in Stark County in October 2020. On average in Q2 (Apr-Jun) 2020, the private industry in Stark County employing the largest number of workers was Mining, Quarrying, and Oil and Gas Extraction. The private industry with the highest average weekly wage in Q2 (Apr-Jun) 2020 was Mining, Quarrying, and Oil and Gas Extraction.



SUMMARY STATISTICS		Stark County	North Dakota
<b>Population</b>	[CENS 2019]	31,489	762,062
1-Year Numeric Change		+596	+3,982
1-Year Percent Change		+1.9	+0.5
Numeric Change Since 2010 Census		+7,290	+89,471
Percent Change Since 2010 Census		+30.1	+13.3
<b>Largest City (incorporated places)</b>	[CENS 2019]	Dickinson	Fargo
<b>Largest City Population</b>	[CENS 2019]	23,133	124,662
<b>Population Race and Ethnicity (%)</b>	[CENS 2019]		
White		91.7	86.9
Black or African American		3.0	3.4
American Indian and Alaska Native		1.7	5.6
Asian		1.6	1.7
Native Hawaiian and Other Pacific Islander		0.1	0.1
Other Race or Two or More Races		2.0	2.3
Hispanic or Latino (of any race)		5.7	4.1
Not Hispanic or Latino		94.3	95.9
<small>[Hispanic origin is considered an ethnicity, not a race; Hispanics may be of any race]</small>			
<b>Population Age Groups (%)</b>	[CENS 2019]		
Under 25 years		34.8	34.5
25 to 44 years		29.7	27.2
45 to 64 years		21.6	22.6
65 years and over		13.9	15.7
<b>Median Age</b>	[CENS 2019]	33.9	35.3
<b>Place of Birth (%)</b>	[ACS 2014-18]		
Born in the U.S. (in State of Residence)		56.0	63.1
Born in the U.S. (Outside State of Residence)		40.8	33.0
Born Outside U.S.		3.3	3.9

Sources: ACS U.S. Census Bureau, American Community Survey; BEA U.S. Bureau of Economic Analysis; CENS U.S. Census Bureau; DPI North Dakota Dept of Public Instruction; LAUS Labor Market Information Center, Job Service ND, Local Area Unemployment Statistics; LED U.S. Census Bureau, Local Employment Dynamics; OJOR Labor Market Information Center, Job Service ND, Online Job Openings Report; QCEW Labor Market Information Center, Job Service ND, Quarterly Census of Employment and Wages; TAX North Dakota Office of State Tax Commissioner; UI Labor Market Information Center, Job Service ND, Unemployment Insurance Statistics

Data current as of November 4, 2020. Data are not seasonally adjusted. Asterisks (\*\*\*) indicate data cannot be released due to reliability, availability or confidentiality restrictions.

# STARK COUNTY AREA PROFILE

SUMMARY STATISTICS		Stark County	North Dakota
<b>Mobility Status 1 Year Ago (%)</b>	[ACS 2014-18]		
Resided in Same House		81.8	82.1
Resided in Different House, Same County		8.4	8.8
Resided in Different House and County, Same State		2.7	3.4
Resided in Different State or Abroad		7.2	5.6
<b>Highest Educational Attainment (%)</b>	[ACS 2014-18]		
No High School Diploma		8.2	7.5
High School Diploma or Equivalent		33.0	26.8
Some College, No Degree		23.9	22.6
Associate's Degree		12.0	13.7
Bachelor's Degree		16.6	21.5
Graduate or Professional Degree		6.3	7.9
[Percent of the population 25 years and over]			
<b>K-12 Public School Fall Enrollment</b>	[DPI 2019]	4,908	112,858
1-Year Numeric Change		+229	+2,016
1-Year Percent Change		+4.9	+1.8
<b>Population Below Poverty Level (%)</b>	[ACS 2014-18]	8.8	10.9
<b>Population without Health Insurance (%)</b>	[ACS 2014-18]	9.1	7.4
[Percent of the civilian noninstitutionalized population without public or private health insurance]			
<b>Labor Force</b>	[LAUS SEP 2020]	18,076	396,445
1-Year Numeric Change		-328	-7,451
1-Year Percent Change		-1.8	-1.8
[Civilian population 16 years and over working or actively seeking work]			
<b>Unemployed</b>	[LAUS SEP 2020]	1,127	15,086
1-Year Numeric Change		+818	+7,652
1-Year Percent Change		+264.7	+102.9
<b>Unemployment Rate (%)</b>	[LAUS SEP 2020]	6.2	3.8
Same Month, 1 Year Ago		1.7	1.8
<b>Labor Force Participation Rate (%)</b>	[ACS 2014-18]	71.2	69.2
[Percent of the civilian population 16 years and over working or actively seeking work]			
<b>Job Openings</b>	[OJOR OCT 2020]	515	13,055
1-Year Numeric Change		-161	-1,732
1-Year Percent Change		-23.8	-11.7

Sources: ACS U.S. Census Bureau, American Community Survey; BEA U.S. Bureau of Economic Analysis; CENS U.S. Census Bureau; DPI North Dakota Dept of Public Instruction; LAUS Labor Market Information Center, Job Service ND, Local Area Unemployment Statistics; LED U.S. Census Bureau, Local Employment Dynamics; OJOR Labor Market Information Center, Job Service ND, Online Job Openings Report; QCEW Labor Market Information Center, Job Service ND, Quarterly Census of Employment and Wages; TAX North Dakota Office of State Tax Commissioner; UI Labor Market Information Center, Job Service ND, Unemployment Insurance Statistics

Data current as of November 4, 2020. Data are not seasonally adjusted. Asterisks (\*\*\*) indicate data cannot be released due to reliability, availability or confidentiality restrictions.

# STARK COUNTY AREA PROFILE

SUMMARY STATISTICS		Stark County	North Dakota
<b>Unemployed per Job Opening</b>	[OJOR SEP 2020]	2.70	1.19
Same Month, 1 Year Ago		0.50	0.53
<b>Active Résumés</b>	[OJOR OCT 2020]	1,297	14,329
1-Year Numeric Change		+956	+9,884
1-Year Percent Change		+280.4	+222.4
<b>Active Résumés per Job Opening</b>	[OJOR OCT 2020]	2.52	1.10
Same Month, 1 Year Ago		0.50	0.30
<b>Initial Jobless Claims</b>	[UI SEP 2020]	261	4,057
1-Year Numeric Change		+210	+2,863
1-Year Percent Change		+411.8	+239.8
<b>Average Employment</b>	[QCEW Q2 (APR-JUN) 2020]	17,321	380,554
1-Year Numeric Change		-2,980	-46,166
1-Year Percent Change		-14.7	-10.8
<b>Business Establishments</b>	[QCEW Q2 (APR-JUN) 2020]	1,450	32,428
1-Year Numeric Change		+24	+505
1-Year Percent Change		+1.7	+1.6
<b>Average Weekly Wage (\$)</b>	[QCEW Q2 (APR-JUN) 2020]	1,200	1,061
1-Year Numeric Change		-31	+34
1-Year Percent Change		-2.5	+3.3
<b>Worker New Hires</b>	[LED Q1 (JAN-MAR) 2019]	1,740	33,032
1-Year Numeric Change		+147	+1,081
1-Year Percent Change		+9.2	+3.4
<b>Worker New Hires Rate (%)</b>	[LED Q1 (JAN-MAR) 2019]	12.2	10.3
Same Quarter, 1 Year Ago		11.9	9.9
<b>Worker Separations</b>	[LED Q1 (JAN-MAR) 2019]	1,320	26,899
1-Year Numeric Change		+4	+685
1-Year Percent Change		+0.3	+2.6
<b>Worker Separations Rate (%)</b>	[LED Q1 (JAN-MAR) 2019]	10.7	10.0
Same Quarter, 1 Year Ago		11.2	10.2
<b>Turnover Rate (%)</b>	[LED Q1 (JAN-MAR) 2019]	11.2	9.8
Same Quarter, 1 Year Ago		10.5	9.7

Sources: ACS U.S. Census Bureau, American Community Survey; BEA U.S. Bureau of Economic Analysis; CENS U.S. Census Bureau; DPI North Dakota Dept of Public Instruction; LAUS Labor Market Information Center, Job Service ND, Local Area Unemployment Statistics; LED U.S. Census Bureau, Local Employment Dynamics; OJOR Labor Market Information Center, Job Service ND, Online Job Openings Report; QCEW Labor Market Information Center, Job Service ND, Quarterly Census of Employment and Wages; TAX North Dakota Office of State Tax Commissioner; UI Labor Market Information Center, Job Service ND, Unemployment Insurance Statistics

Data current as of November 4, 2020. Data are not seasonally adjusted. Asterisks (\*\*\*) indicate data cannot be released due to reliability, availability or confidentiality restrictions.

# STARK COUNTY AREA PROFILE

SUMMARY STATISTICS		Stark County	North Dakota
<b>Per Capita Personal Income (\$)</b>	[BEA 2018]	61,032	55,788
1-Year Numeric Change		+1,722	+3,052
1-Year Percent Change		+2.9	+5.8
<b>Taxable Sales and Purchases (\$)</b>	[TAX Q2 (APR-JUN) 2020]	167,035,668	4,341,660,689
1-Year Numeric Change		-107,531,510	-1,259,780,972
1-Year Percent Change		-39.2	-22.5
<b>New Residential Construction (Housing Units)</b>	[CENS 2019]	87	2,495
1-Year Numeric Change		+14	-716
1-Year Percent Change		+19.2	-22.3
<b>Class of Worker (%)</b>	[ACS 2014-18]		
Private Wage and Salary Workers		79.2	76.5
Government Workers		13.3	15.7
Self-Employed Workers		7.3	7.5
Unpaid Family Workers		0.2	0.3
[Percent of the civilian employed population 16 years and over]			
<b>Worker Occupations (%)</b>	[ACS 2014-18]		
Management, Business, Science, and Arts Occupations		30.7	36.8
Service Occupations		16.7	17.4
Sales and Office Occupations		19.5	20.3
Natural Resources, Construction, and Maintenance Occupations		16.2	12.3
Production, Transportation, and Material Moving Occupations		16.9	13.3
[Percent of the civilian employed population 16 years and over]			
<b>Usual Worker Hours per Week</b>	[ACS 2014-18]		
Work 35 or More Hours per Week (%)		80.4	79.1
Work Between 15 and 34 Hours per Week (%)		14.6	16.5
Work Less Than 15 Hours per Week (%)		5.0	4.4
Average Weekly Hours		43.5	40.6
[Percent of the employed population 16 to 64 years]			
<b>Average Commute Time to Work (in minutes)</b>	[ACS 2014-18]	18.4	17.1
<b>Work at Home (%)</b>	[ACS 2014-18]	4.8	4.7
[Percent of the employed population 16 years and over working from home a majority of the time]			

Sources: ACS U.S. Census Bureau, American Community Survey; BEA U.S. Bureau of Economic Analysis; CENS U.S. Census Bureau; DPI North Dakota Dept of Public Instruction; LAUS Labor Market Information Center, Job Service ND, Local Area Unemployment Statistics; LED U.S. Census Bureau, Local Employment Dynamics; OJOR Labor Market Information Center, Job Service ND, Online Job Openings Report; QCEW Labor Market Information Center, Job Service ND, Quarterly Census of Employment and Wages; TAX North Dakota Office of State Tax Commissioner; UI Labor Market Information Center, Job Service ND, Unemployment Insurance Statistics

Data current as of November 4, 2020. Data are not seasonally adjusted. Asterisks (\*\*\*) indicate data cannot be released due to reliability, availability or confidentiality restrictions.

# STARK COUNTY AREA PROFILE

SUMMARY STATISTICS		Stark County	North Dakota
<b>Median Household Income (\$)</b>	[ACS 2014-18]	75,708	63,473
Median Family Income (\$)		97,721	83,272
Median Nonfamily Income (\$)		44,004	37,577
[2018 inflation-adjusted dollars]			
<b>Housing Units</b>	[CENS 2019]	14,880	380,173
1-Year Numeric Change		+65	+2,873
1-Year Percent Change		+0.4	+0.8
<b>Owner-Occupied Housing Units (%)</b>	[ACS 2014-18]	62.2	62.7
<b>Renter-Occupied Housing Units (%)</b>	[ACS 2014-18]	37.8	37.3
<b>Vacant Housing Units (%)</b>	[ACS 2014-18]	15.8	14.4
<b>Homeowner Vacancy Rate (%)</b>	[ACS 2014-18]	2.5	1.5
<b>Rental Vacancy Rate (%)</b>	[ACS 2014-18]	14.0	9.4
<b>Median Value of Owner-Occupied Housing Units (\$)</b>	[ACS 2014-18]	238,100	185,000
<b>Owner-Occupied Housing Units with a Mortgage (%)</b>	[ACS 2014-18]	56.4	53.2
<b>Owner-Occupied Housing Units without a Mortgage (%)</b>	[ACS 2014-18]	43.6	46.8
<b>Median Monthly Owner Costs for Housing Units with a Mortgage (\$)</b>	[ACS 2014-18]	1,504	1,389
Percent Above or Below the ND Median		+8.3	
<b>Median Monthly Owner Costs for Housing Units without a Mortgage (\$)</b>	[ACS 2014-18]	475	455
Percent Above or Below the ND Median		+4.4	
<b>Median Rent for Occupied Units Paying Rent (\$)</b>	[ACS 2014-18]	929	806
Percent Above or Below the ND Median		+15.3	
<b>Proportion of Housing Units with a Mortgage where Monthly Owner Costs are equal to or greater than 30 percent of Household Income (%)</b>	[ACS 2014-18]	19.2	16.8
<b>Proportion of Occupied Units Paying Rent where Monthly Costs are equal to or greater than 30 percent of Household Income (%)</b>	[ACS 2014-18]	30.6	38.7

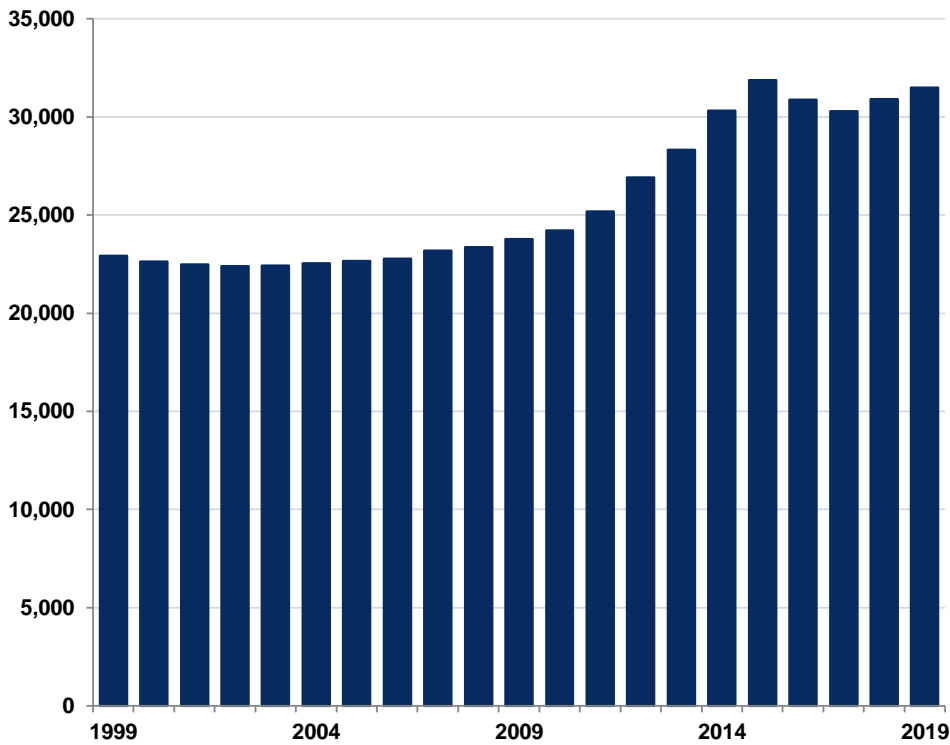
Sources: ACS U.S. Census Bureau, American Community Survey; BEA U.S. Bureau of Economic Analysis; CENS U.S. Census Bureau; DPI North Dakota Dept of Public Instruction; LAUS Labor Market Information Center, Job Service ND, Local Area Unemployment Statistics; LED U.S. Census Bureau, Local Employment Dynamics; OJOR Labor Market Information Center, Job Service ND, Online Job Openings Report; QCEW Labor Market Information Center, Job Service ND, Quarterly Census of Employment and Wages; TAX North Dakota Office of State Tax Commissioner; UI Labor Market Information Center, Job Service ND, Unemployment Insurance Statistics

Data current as of November 4, 2020. Data are not seasonally adjusted. Asterisks (\*\*\*) indicate data cannot be released due to reliability, availability or confidentiality restrictions.

# STARK COUNTY AREA PROFILE

## POPULATION

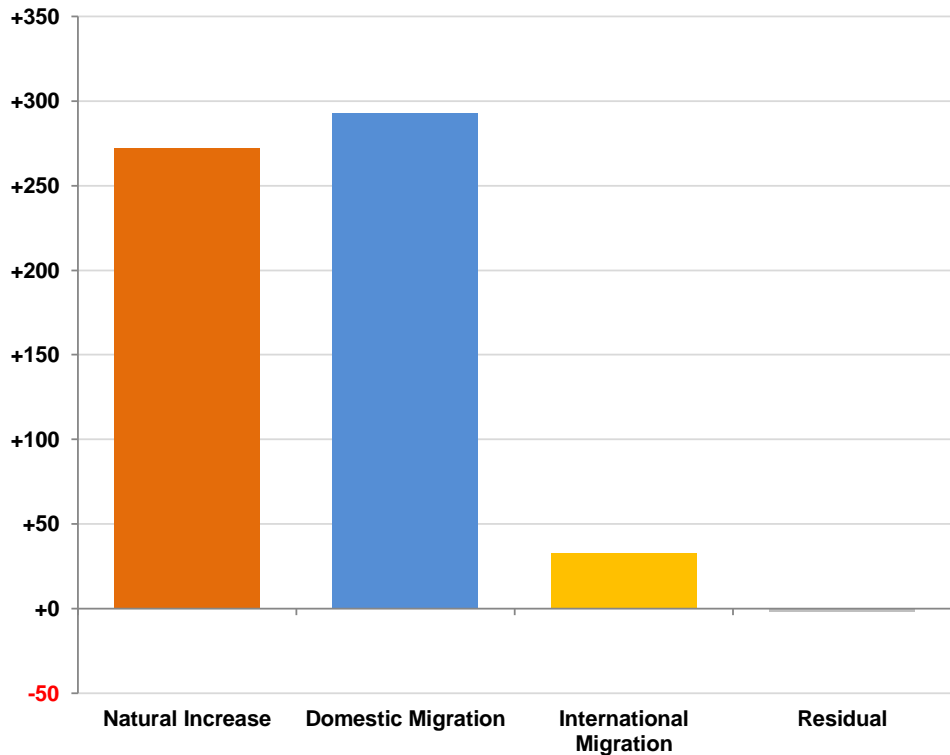
[CENS 2019]



1-Year Numeric Change	+596
1-Year Percent Change	+1.9
5-Year Numeric Change	+1,174
5-Year Percent Change	+3.9

## COMPONENTS OF POPULATION CHANGE [1-YR CHANGE]

[CENS 2019]



Natural Increase	+272
Domestic Migration	+293
International Migration	+33
Residual	-2

[the components of population change consist of natural increase (births minus deaths), domestic migration (migration within the US), international migration (migration of both native and foreign-born populations between the US and elsewhere), and a residual (population change that cannot be attributed to any specific demographic component)]

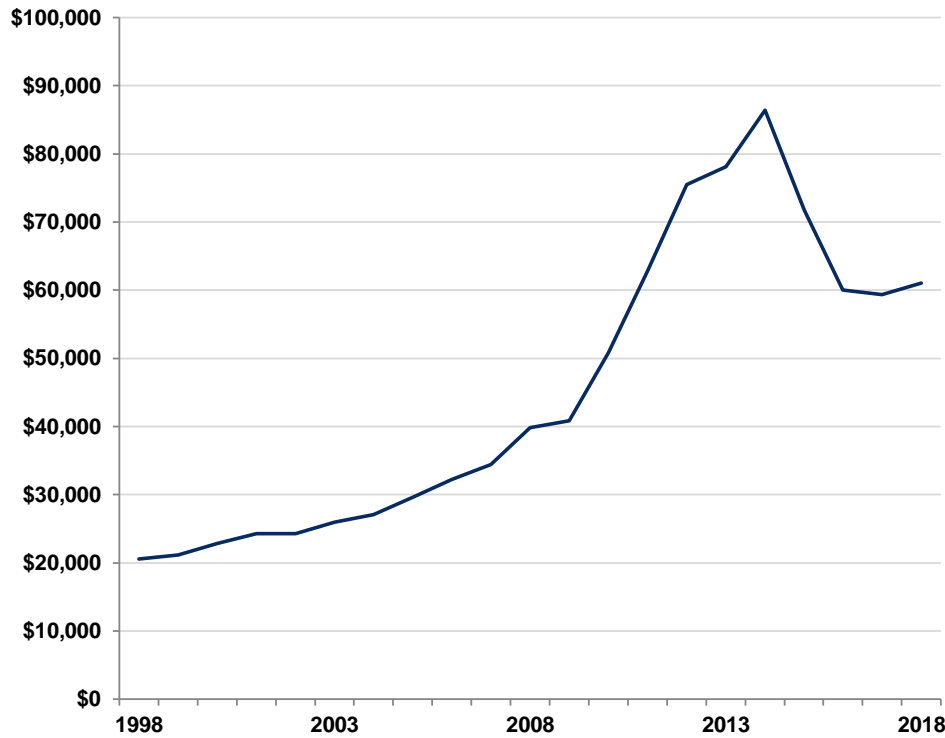
Sources: CENS U.S. Census Bureau

Data current as of November 4, 2020. Data are not seasonally adjusted. Asterisks (\*\*\*) indicate data cannot be released due to reliability, availability or confidentiality restrictions.

# STARK COUNTY AREA PROFILE

## PER CAPITA PERSONAL INCOME (\$)

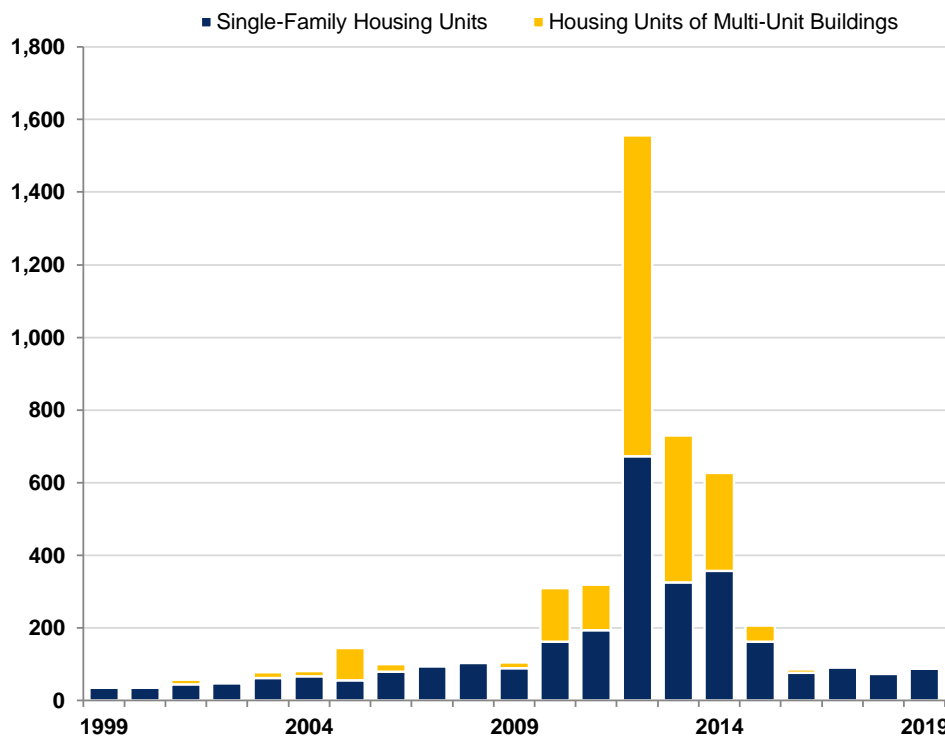
[BEA 2018]



	61,032
1-Year Numeric Change	+1,722
1-Year Percent Change	+2.9
5-Year Numeric Change	-17,090
5-Year Percent Change	-21.9

## NEW RESIDENTIAL CONSTRUCTION (HOUSING UNITS)

[CENS 2019]



	87
1-Year Numeric Change	+14
1-Year Percent Change	+19.2
5-Year Numeric Change	-540
5-Year Percent Change	-86.1

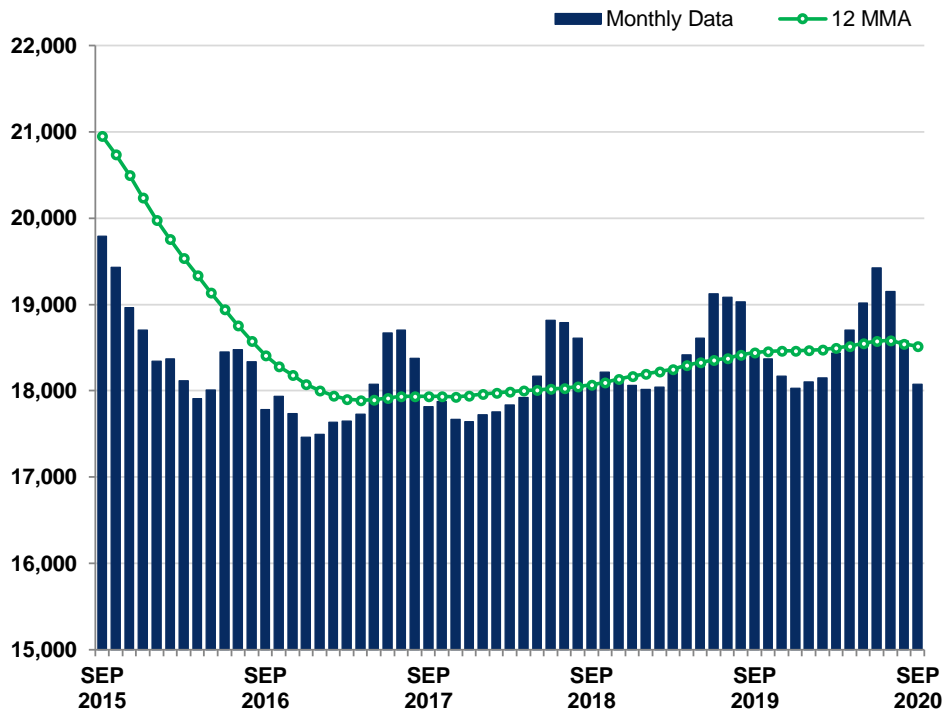
Sources: BEA U.S. Bureau of Economic Analysis; CENS U.S. Census Bureau

Data current as of November 4, 2020. Data are not seasonally adjusted. Asterisks (\*\*\*) indicate data cannot be released due to reliability, availability or confidentiality restrictions.

# STARK COUNTY AREA PROFILE

## LABOR FORCE

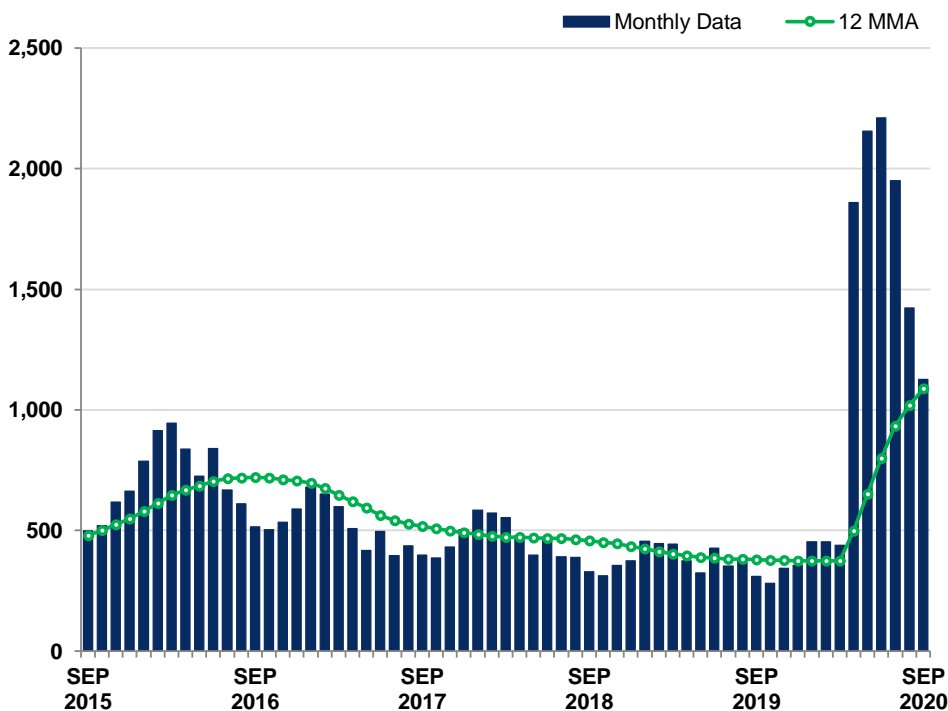
[LAUS SEP 2020]



18,076
1-Year Numeric Change
-328
1-Year Percent Change
-1.8
5-Year Numeric Change
-1,717
5-Year Percent Change
-8.7
12-Month Moving Average
18,517
1-Year Numeric Change
+71
1-Year Percent Change
+0.4
5-Year Numeric Change
-2,435
5-Year Percent Change
-11.6

## UNEMPLOYED

[LAUS SEP 2020]



1,127
1-Year Numeric Change
+818
1-Year Percent Change
+264.7
5-Year Numeric Change
+629
5-Year Percent Change
+126.3
12-Month Moving Average
1,087
1-Year Numeric Change
+708
1-Year Percent Change
+186.8
5-Year Numeric Change
+607
5-Year Percent Change
+126.5

Sources: LAUS Labor Market Information Center, Job Service ND, Local Area Unemployment Statistics

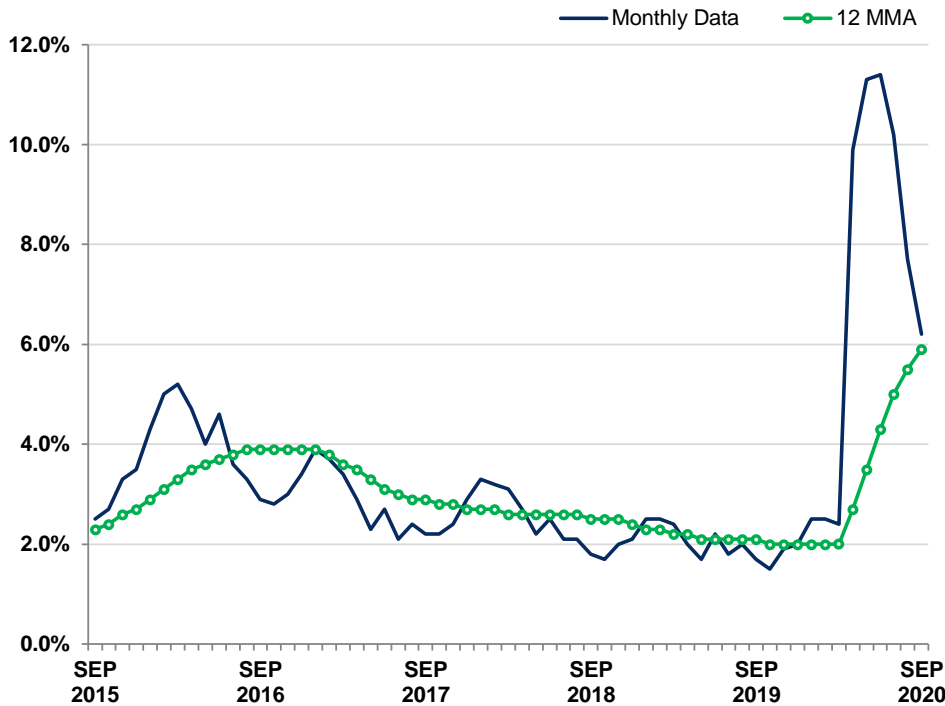
Data current as of November 4, 2020. Data are not seasonally adjusted. Asterisks (\*\*\*) indicate data cannot be released due to reliability, availability or confidentiality restrictions.



# STARK COUNTY AREA PROFILE

## UNEMPLOYMENT RATE (%)

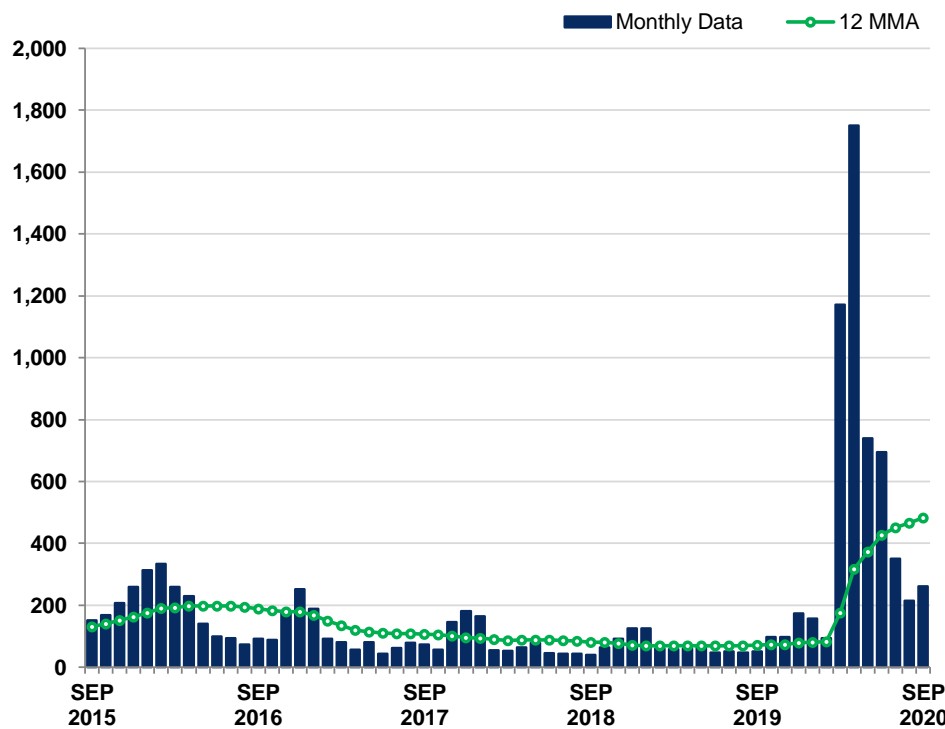
[LAUS SEP 2020]



6.2	
Same Month, 1 Year Ago	1.7
Same Month, 5 Years Ago	2.5
12-Month Moving Average	5.9
Same Month, 1 Year Ago	2.1
Same Month, 5 Years Ago	2.3

## INITIAL JOBLESS CLAIMS

[UI SEP 2020]



261	
1-Year Numeric Change	+210
1-Year Percent Change	+411.8
5-Year Numeric Change	+109
5-Year Percent Change	+71.7
12-Month Moving Average	483
1-Year Numeric Change	+412
1-Year Percent Change	+580.3
5-Year Numeric Change	+352
5-Year Percent Change	+268.7

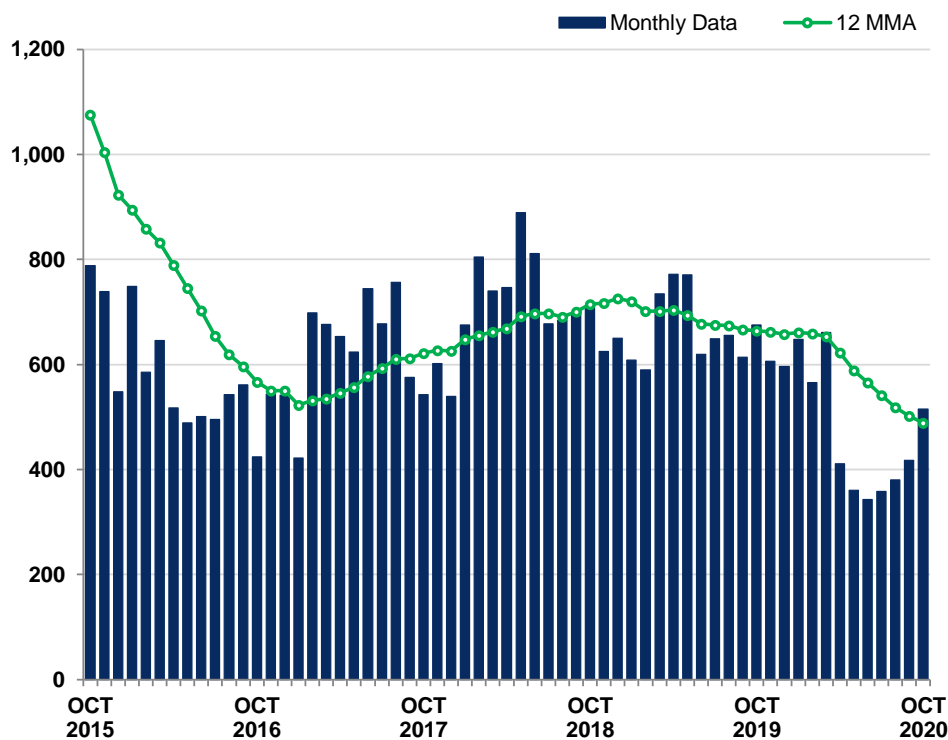
Sources: LAUS Labor Market Information Center, Job Service ND, Local Area Unemployment Statistics; UI Labor Market Information Center, Job Service ND, Unemployment Insurance Statistics

Data current as of November 4, 2020. Data are not seasonally adjusted. Asterisks (\*\*\*) indicate data cannot be released due to reliability, availability or confidentiality restrictions.

# STARK COUNTY AREA PROFILE

## JOB OPENINGS

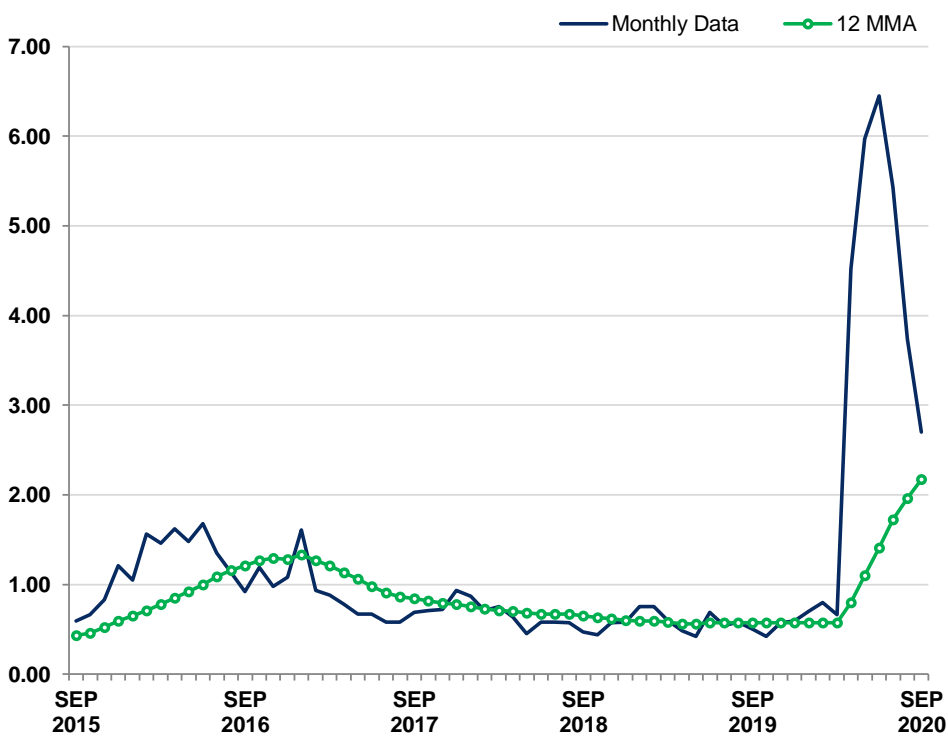
[OJOR OCT 2020]



1-Year Numeric Change	515
1-Year Percent Change	-161
5-Year Numeric Change	-23.8
5-Year Percent Change	-273
12-Month Moving Average	-34.6
12-Month Moving Average	489
1-Year Numeric Change	-175
1-Year Percent Change	-26.4
5-Year Numeric Change	-587
5-Year Percent Change	-54.6

## UNEMPLOYED PER JOB OPENING

[OJOR SEP 2020]



Same Month, 1 Year Ago	2.70
Same Month, 5 Years Ago	0.50
12-Month Moving Average	0.59
12-Month Moving Average	2.17
Same Month, 1 Year Ago	0.57
Same Month, 5 Years Ago	0.43

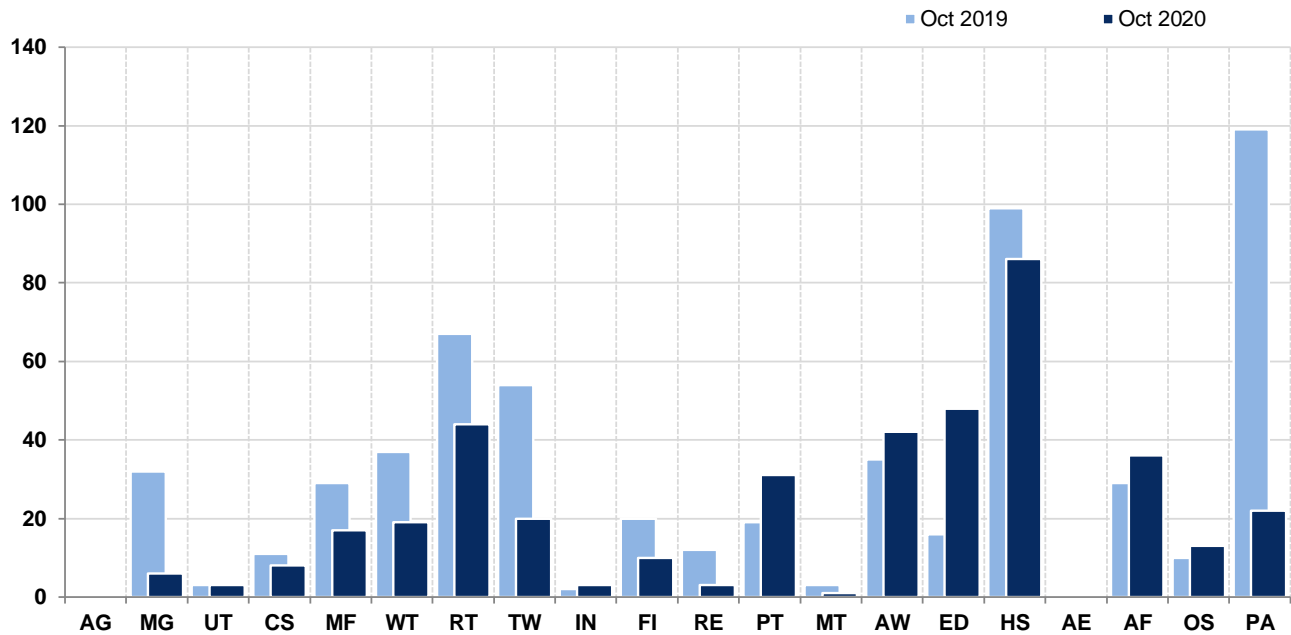
Sources: OJOR Labor Market Information Center, Job Service ND, Online Job Openings Report

Data current as of November 4, 2020. Data are not seasonally adjusted. Asterisks (\*\*\*) indicate data cannot be released due to reliability, availability or confidentiality restrictions.

# STARK COUNTY AREA PROFILE

## JOB OPENINGS BY INDUSTRY

[OJOR OCT 2020]



Stark County						
Abbr	[2-Digit NAICS Code] Industry	Openings Oct 2019	Openings Oct 2020	Numeric Change	Percent Change	Pct of Total
AG	[11] Agriculture, Forestry, Fishing and Hunting	0	0	0	0.0	0.0
MG	[21] Mining, Quarrying, and Oil and Gas Extraction	32	6	-26	-81.3	1.2
UT	[22] Utilities	3	3	0	0.0	0.6
CS	[23] Construction	11	8	-3	-27.3	1.6
MF	[31-33] Manufacturing	29	17	-12	-41.4	3.3
WT	[42] Wholesale Trade	37	19	-18	-48.6	3.7
RT	[44-45] Retail Trade	67	44	-23	-34.3	8.5
TW	[48-49] Transportation and Warehousing	54	20	-34	-63.0	3.9
IN	[51] Information	2	3	+1	+50.0	0.6
FI	[52] Finance and Insurance	20	10	-10	-50.0	1.9
RE	[53] Real Estate and Rental and Leasing	12	3	-9	-75.0	0.6
PT	[54] Professional and Technical Services	19	31	+12	+63.2	6.0
MT	[55] Management of Companies and Enterprises	3	1	-2	-66.7	0.2
AW	[56] Administrative and Waste Services	35	42	+7	+20.0	8.2
ED	[61] Educational Services	16	48	+32	+200.0	9.3
HS	[62] Health Care and Social Assistance	99	86	-13	-13.1	16.7
AE	[71] Arts, Entertainment, and Recreation	0	0	0	0.0	0.0
AF	[72] Accommodation and Food Services	29	36	+7	+24.1	7.0
OS	[81] Other Services (except Public Administration)	10	13	+3	+30.0	2.5
PA	[92] Public Administration	119	22	-97	-81.5	4.3
NC	Unclassified	79	103	+24	+30.4	20.0
TL	<b>Total, All Occupations</b>	<b>676</b>	<b>515</b>	<b>-161</b>	<b>-23.8</b>	<b>100.0</b>

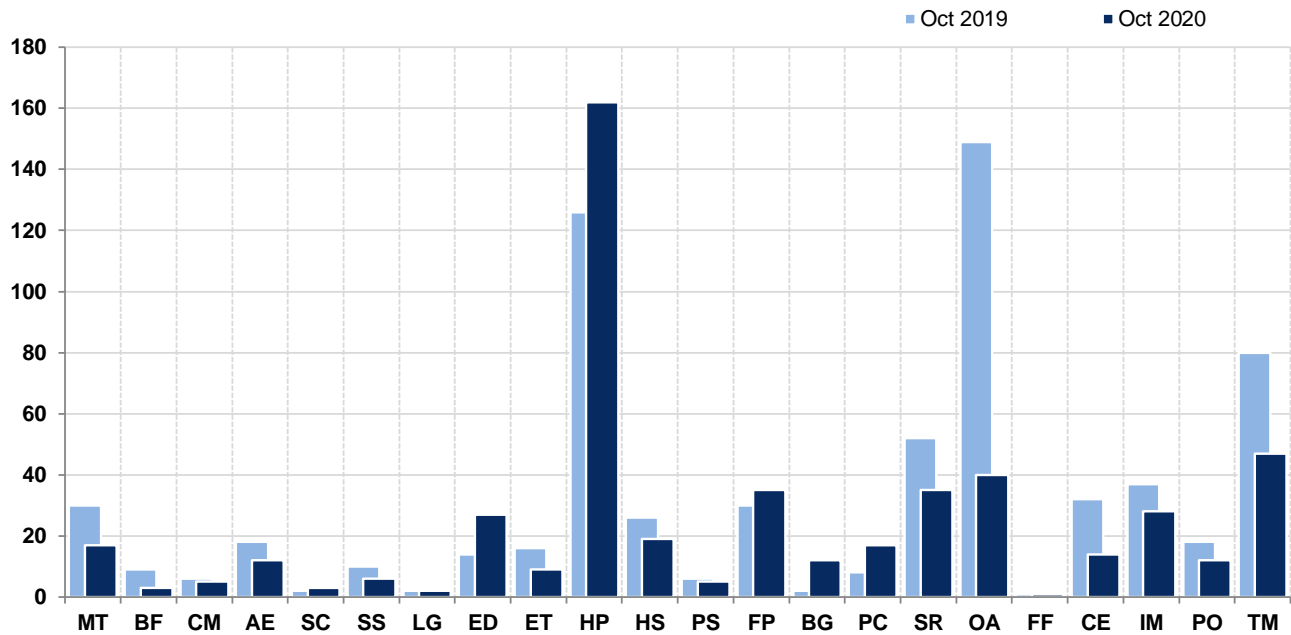
Sources: OJOR Labor Market Information Center, Job Service ND, Online Job Openings Report

Data current as of November 4, 2020. Data are not seasonally adjusted. Asterisks (\*\*\*) indicate data cannot be released due to reliability, availability or confidentiality restrictions.

# STARK COUNTY AREA PROFILE

## JOB OPENINGS BY OCCUPATION GROUP

[OJOR OCT 2020]



Stark County						
Abbr	[2-Digit SOC Code] Occupation Group	Openings Oct 2019	Openings Oct 2020	Numeric Change	Percent Change	Pct of Total
MT	[11] Management	30	17	-13	-43.3	3.3
BF	[13] Business and Financial Operations	9	3	-6	-66.7	0.6
CM	[15] Computer and Mathematical	6	5	-1	-16.7	1.0
AE	[17] Architecture and Engineering	18	12	-6	-33.3	2.3
SC	[19] Life, Physical, and Social Science	2	3	+1	+50.0	0.6
SS	[21] Community and Social Service	10	6	-4	-40.0	1.2
LG	[23] Legal	2	2	0	0.0	0.4
ED	[25] Education, Training, and Library	14	27	+13	+92.9	5.2
ET	[27] Arts, Design, Entertainment, Sports, and Media	16	9	-7	-43.8	1.7
HP	[29] Healthcare Practitioners and Technical	126	162	+36	+28.6	31.5
HS	[31] Healthcare Support	26	19	-7	-26.9	3.7
PS	[33] Protective Service	6	5	-1	-16.7	1.0
FP	[35] Food Preparation and Serving Related	30	35	+5	+16.7	6.8
BG	[37] Building and Grounds Cleaning and Maintenance	2	12	+10	+500.0	2.3
PC	[39] Personal Care and Service	8	17	+9	+112.5	3.3
SR	[41] Sales and Related	52	35	-17	-32.7	6.8
OA	[43] Office and Administrative Support	149	40	-109	-73.2	7.8
FF	[45] Farming, Fishing, and Forestry	1	1	0	0.0	0.2
CE	[47] Construction and Extraction	32	14	-18	-56.3	2.7
IM	[49] Installation, Maintenance, and Repair	37	28	-9	-24.3	5.4
PO	[51] Production	18	12	-6	-33.3	2.3
TM	[53] Transportation and Material Moving	80	47	-33	-41.3	9.1
NC	Unclassified	2	4	+2	+100.0	0.8
TL	<b>Total, All Occupations</b>	<b>676</b>	<b>515</b>	<b>-161</b>	<b>-23.8</b>	<b>100.0</b>

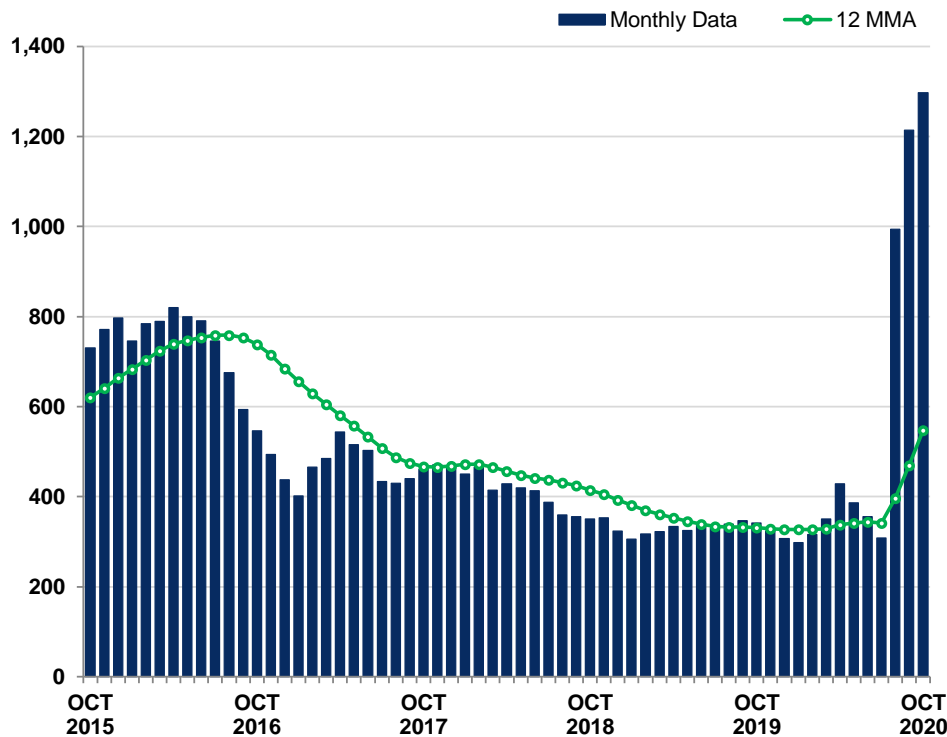
Sources: OJOR Labor Market Information Center, Job Service ND, Online Job Openings Report

Data current as of November 4, 2020. Data are not seasonally adjusted. Asterisks (\*\*\*) indicate data cannot be released due to reliability, availability or confidentiality restrictions.

# STARK COUNTY AREA PROFILE

## ACTIVE RÉSUMÉS

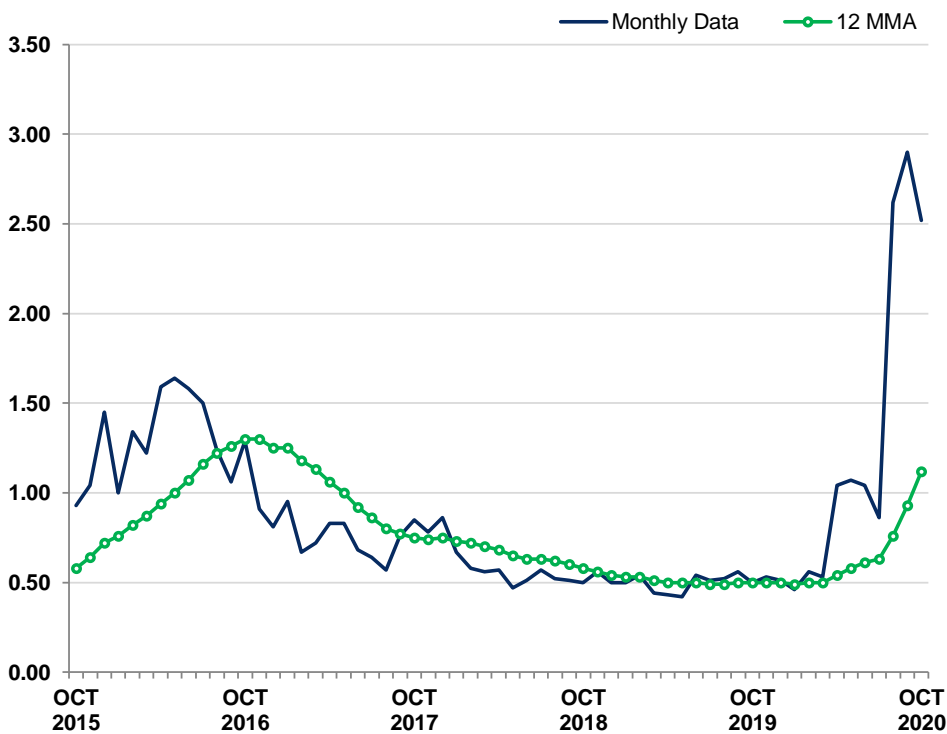
[OJOR OCT 2020]



1,297
1-Year Numeric Change
+956
1-Year Percent Change
+280.4
5-Year Numeric Change
+566
5-Year Percent Change
+77.4
12-Month Moving Average
548
1-Year Numeric Change
+217
1-Year Percent Change
+65.6
5-Year Numeric Change
-73
5-Year Percent Change
-11.8

## ACTIVE RÉSUMÉS PER JOB OPENING

[OJOR OCT 2020]



2.52
Same Month, 1 Year Ago
0.50
Same Month, 5 Years Ago
0.93
12-Month Moving Average
1.12
Same Month, 1 Year Ago
0.50
Same Month, 5 Years Ago
0.58

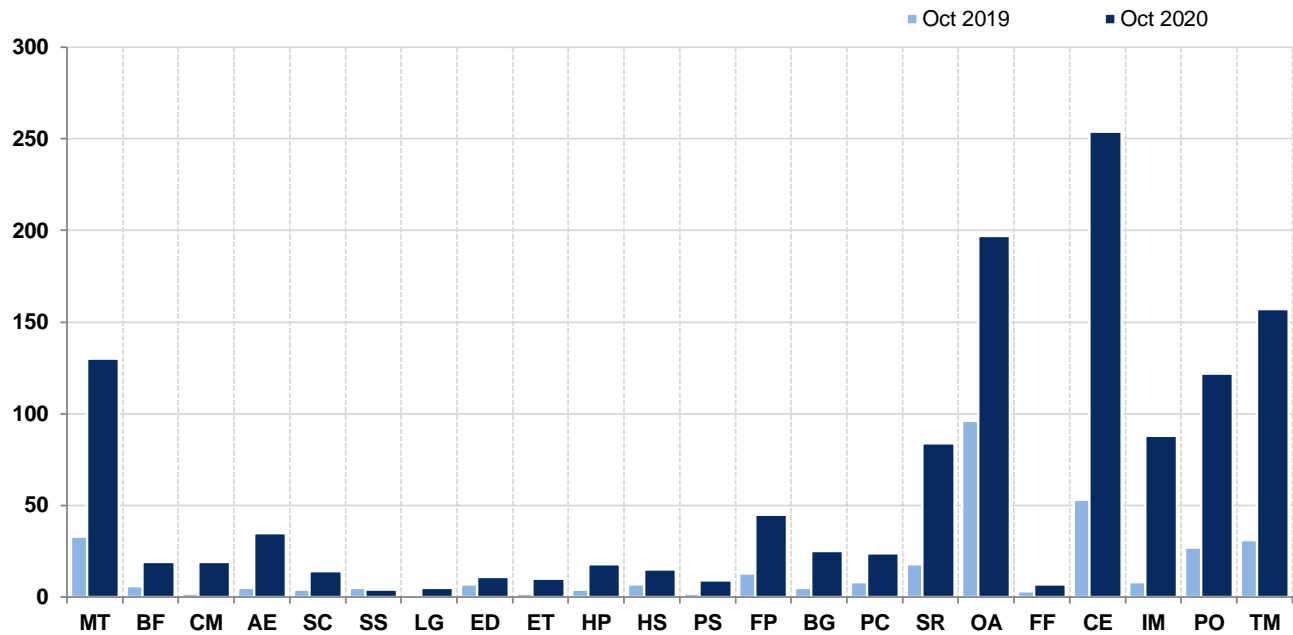
Sources: OJOR Labor Market Information Center, Job Service ND, Online Job Openings Report

Data current as of November 4, 2020. Data are not seasonally adjusted. Asterisks (\*\*\*) indicate data cannot be released due to reliability, availability or confidentiality restrictions.

# STARK COUNTY AREA PROFILE

## ACTIVE RÉSUMÉS BY OCCUPATION GROUP

[OJOR OCT 2020]



Stark County						
Abbr	[2-Digit SOC Code] Occupation Group	Résumés Oct 2019	Résumés Oct 2020	Numeric Change	Percent Change	Pct of Total
MT	[11] Management	33	130	+97	+293.9	10.0
BF	[13] Business and Financial Operations	6	19	+13	+216.7	1.5
CM	[15] Computer and Mathematical	2	19	+17	+850.0	1.5
AE	[17] Architecture and Engineering	5	35	+30	+600.0	2.7
SC	[19] Life, Physical, and Social Science	4	14	+10	+250.0	1.1
SS	[21] Community and Social Service	5	4	-1	-20.0	0.3
LG	[23] Legal	1	5	+4	+400.0	0.4
ED	[25] Education, Training, and Library	7	11	+4	+57.1	0.8
ET	[27] Arts, Design, Entertainment, Sports, and Media	2	10	+8	+400.0	0.8
HP	[29] Healthcare Practitioners and Technical	4	18	+14	+350.0	1.4
HS	[31] Healthcare Support	7	15	+8	+114.3	1.2
PS	[33] Protective Service	2	9	+7	+350.0	0.7
FP	[35] Food Preparation and Serving Related	13	45	+32	+246.2	3.5
BG	[37] Building and Grounds Cleaning and Maintenance	5	25	+20	+400.0	1.9
PC	[39] Personal Care and Service	8	24	+16	+200.0	1.9
SR	[41] Sales and Related	18	84	+66	+366.7	6.5
OA	[43] Office and Administrative Support	96	197	+101	+105.2	15.2
FF	[45] Farming, Fishing, and Forestry	3	7	+4	+133.3	0.5
CE	[47] Construction and Extraction	53	254	+201	+379.2	19.6
IM	[49] Installation, Maintenance, and Repair	8	88	+80	+1,000.0	6.8
PO	[51] Production	27	122	+95	+351.9	9.4
TM	[53] Transportation and Material Moving	31	157	+126	+406.5	12.1
NC	Unclassified	1	5	+4	+400.0	0.4
TL	<b>Total, All Occupations</b>	<b>341</b>	<b>1,297</b>	<b>+956</b>	<b>+280.4</b>	<b>100.0</b>

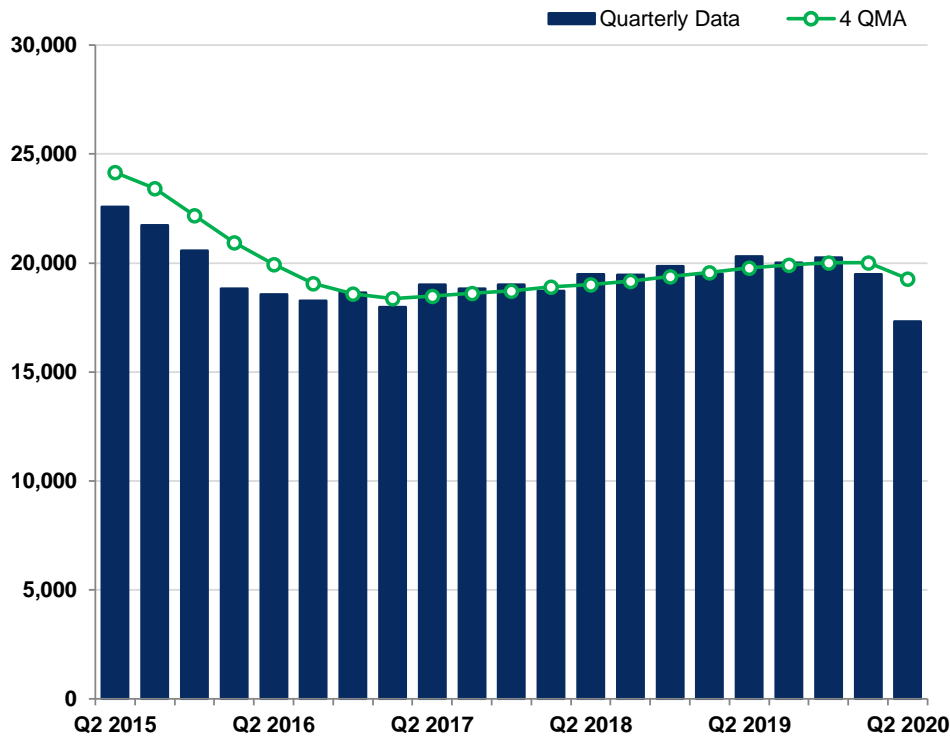
Sources: OJOR Labor Market Information Center, Job Service ND, Online Job Openings Report

Data current as of November 4, 2020. Data are not seasonally adjusted. Asterisks (\*\*\*) indicate data cannot be released due to reliability, availability or confidentiality restrictions.

# STARK COUNTY AREA PROFILE

## AVERAGE EMPLOYMENT

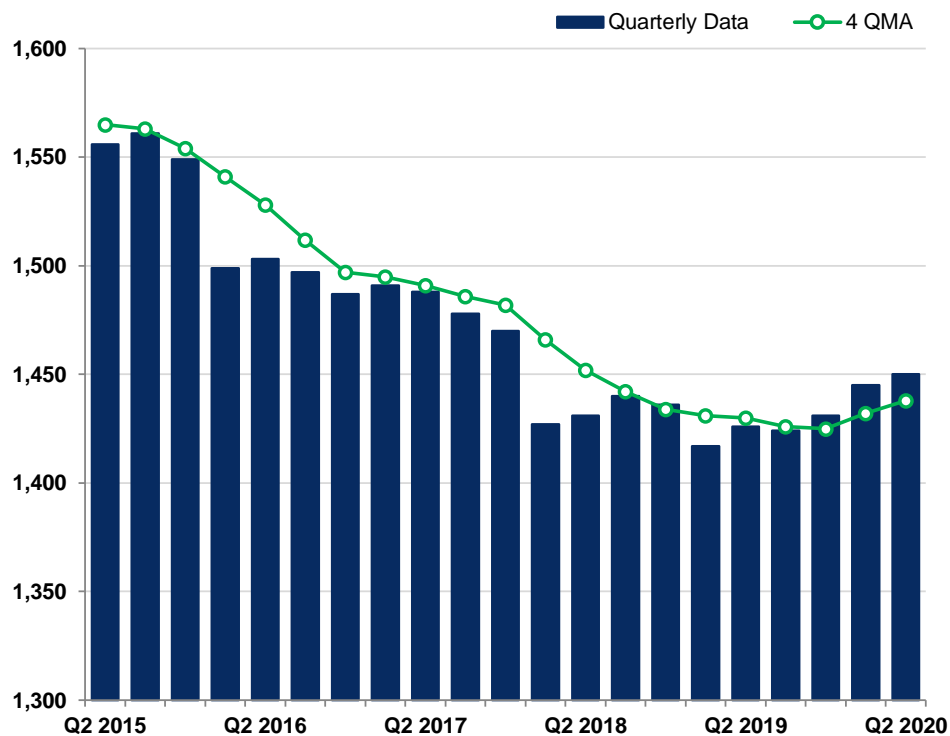
[QCEW Q2 (APR-JUN) 2020]



1-Year Numeric Change	-2,980
1-Year Percent Change	-14.7
5-Year Numeric Change	-5,266
5-Year Percent Change	-23.3
4-Quarter Moving Average	19,269
1-Year Numeric Change	-511
1-Year Percent Change	-2.6
5-Year Numeric Change	-4,886
5-Year Percent Change	-20.2

## BUSINESS ESTABLISHMENTS

[QCEW Q2 (APR-JUN) 2020]



1-Year Numeric Change	+24
1-Year Percent Change	+1.7
5-Year Numeric Change	-106
5-Year Percent Change	-6.8
4-Quarter Moving Average	1,438
1-Year Numeric Change	+8
1-Year Percent Change	+0.6
5-Year Numeric Change	-127
5-Year Percent Change	-8.1

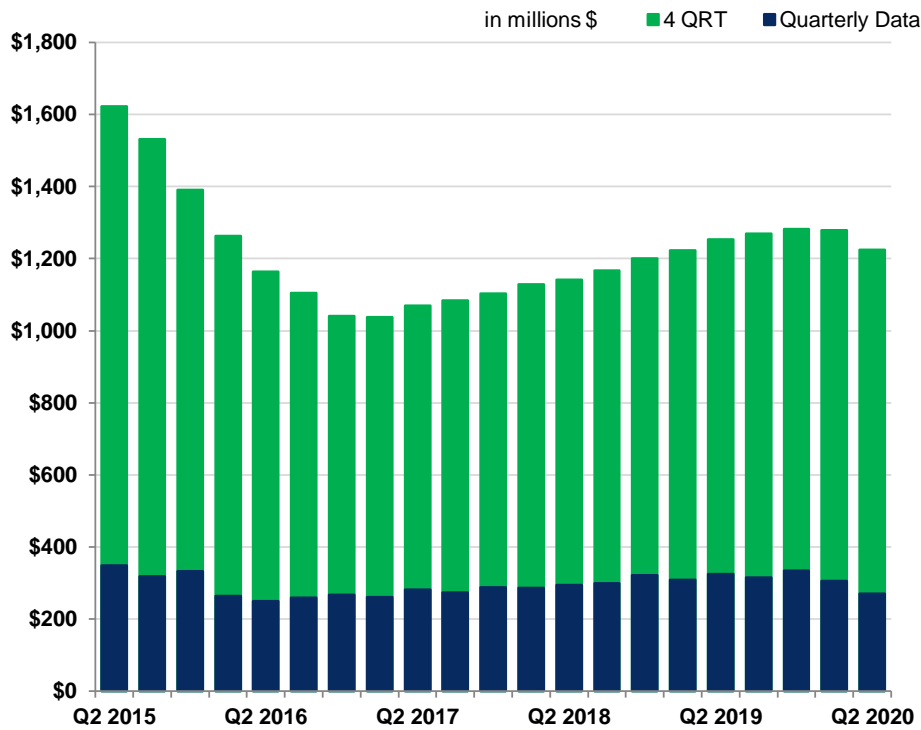
Sources: QCEW Labor Market Information Center, Job Service ND, Quarterly Census of Employment and Wages

Data current as of November 4, 2020. Data are not seasonally adjusted. Asterisks (\*\*\*) indicate data cannot be released due to reliability, availability or confidentiality restrictions.

# STARK COUNTY AREA PROFILE

## TOTAL WAGES (\$)

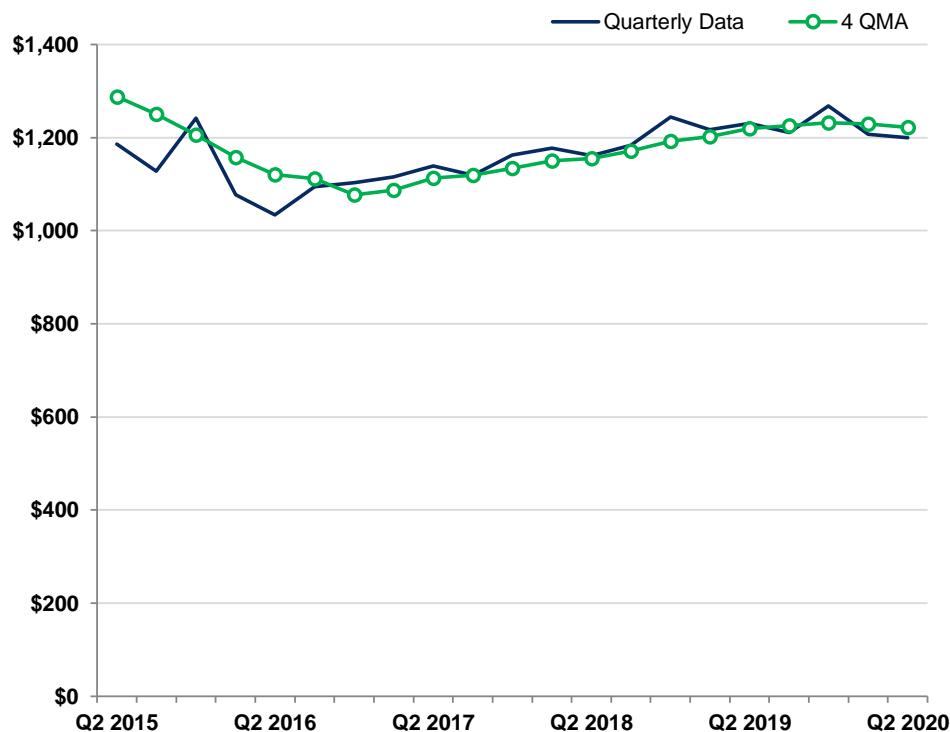
[QCEW Q2 (APR-JUN) 2020]



270,201,728
1-Year Numeric Change
-54,782,473
1-Year Percent Change
-16.9
5-Year Numeric Change
-78,059,854
5-Year Percent Change
-22.4
4-Quarter Rolling Total
1,224,834,376
1-Year Numeric Change
-29,453,879
1-Year Percent Change
-2.3
5-Year Numeric Change
-397,542,072
5-Year Percent Change
-24.5

## AVERAGE WEEKLY WAGE (\$)

[QCEW Q2 (APR-JUN) 2020]



1,200
1-Year Numeric Change
-31
1-Year Percent Change
-2.5
5-Year Numeric Change
+14
5-Year Percent Change
+1.2
4-Quarter Moving Average
1,222
1-Year Numeric Change
+3
1-Year Percent Change
+0.2
5-Year Numeric Change
-66
5-Year Percent Change
-5.1

Sources: QCEW Labor Market Information Center, Job Service ND, Quarterly Census of Employment and Wages

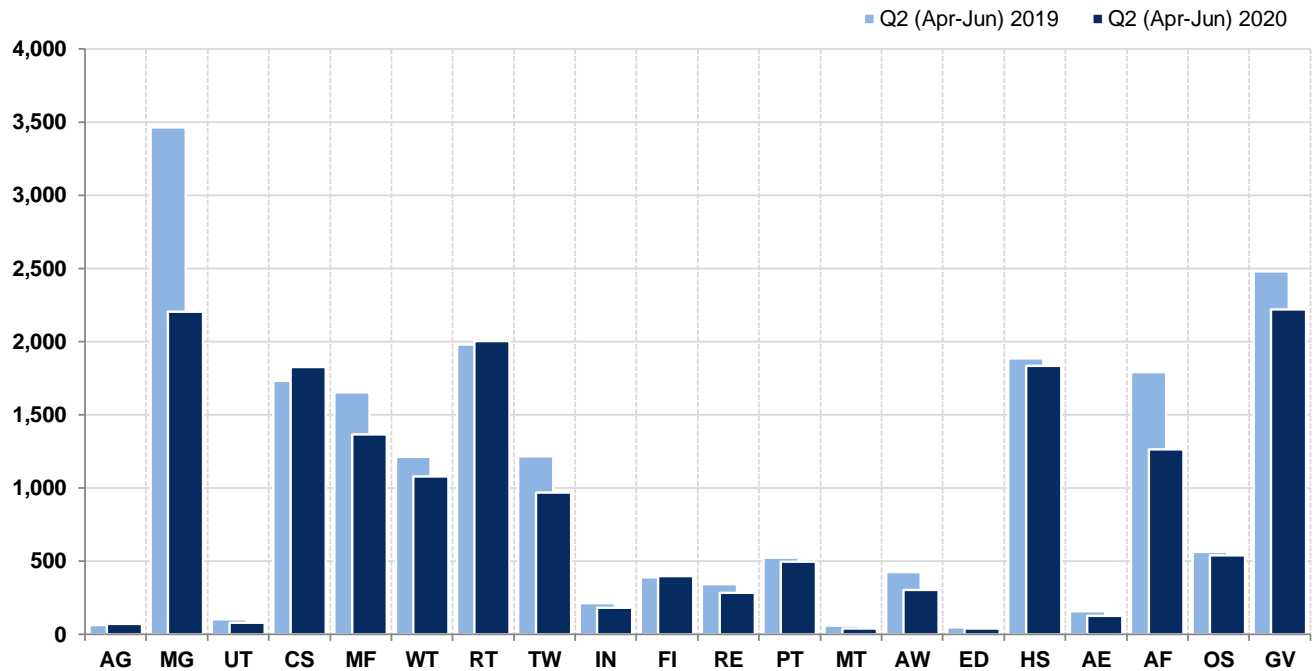
Data current as of November 4, 2020. Data are not seasonally adjusted. Asterisks (\*\*\*) indicate data cannot be released due to reliability, availability or confidentiality restrictions.



# STARK COUNTY AREA PROFILE

## AVERAGE EMPLOYMENT BY INDUSTRY

[QCEW Q2 (APR-JUN) 2020]



Stark County						
Abbr	[2-Digit NAICS Code] Industry	Q2 2019 Avg Employ.	Q2 2020 Avg Employ.	Numeric Change	Percent Change	Percent Share of Total
AG	[11] Agriculture, Forestry, Fishing and Hunting	64	71	+7	+10.9	0.4
MG	[21] Mining, Quarrying, and Oil and Gas Extraction	3,465	2,206	-1,259	-36.3	12.7
UT	[22] Utilities	101	80	-21	-20.8	0.5
CS	[23] Construction	1,733	1,827	+94	+5.4	10.5
MF	[31-33] Manufacturing	1,652	1,366	-286	-17.3	7.9
WT	[42] Wholesale Trade	1,212	1,078	-134	-11.1	6.2
RT	[44-45] Retail Trade	1,978	2,002	+24	+1.2	11.6
TW	[48-49] Transportation and Warehousing	1,217	970	-247	-20.3	5.6
IN	[51] Information	211	183	-28	-13.3	1.1
FI	[52] Finance and Insurance	391	396	+5	+1.3	2.3
RE	[53] Real Estate and Rental and Leasing	344	283	-61	-17.7	1.6
PT	[54] Professional and Technical Services	524	495	-29	-5.5	2.9
MT	[55] Management of Companies and Enterprises	60	41	-19	-31.7	0.2
AW	[56] Administrative and Waste Services	424	302	-122	-28.8	1.7
ED	[61] Educational Services	49	39	-10	-20.4	0.2
HS	[62] Health Care and Social Assistance	1,885	1,833	-52	-2.8	10.6
AE	[71] Arts, Entertainment, and Recreation	157	125	-32	-20.4	0.7
AF	[72] Accommodation and Food Services	1,791	1,265	-526	-29.4	7.3
OS	[81] Other Services (except Government)	563	539	-24	-4.3	3.1
GV	Government	2,479	2,220	-259	-10.4	12.8
<b>TL</b>	<b>Total, All Industries</b>	<b>20,301</b>	<b>17,321</b>	<b>-2,980</b>	<b>-14.7</b>	<b>100.0</b>

[\*Government\* includes employment for public schools, colleges, universities, and hospitals and tribal entities]

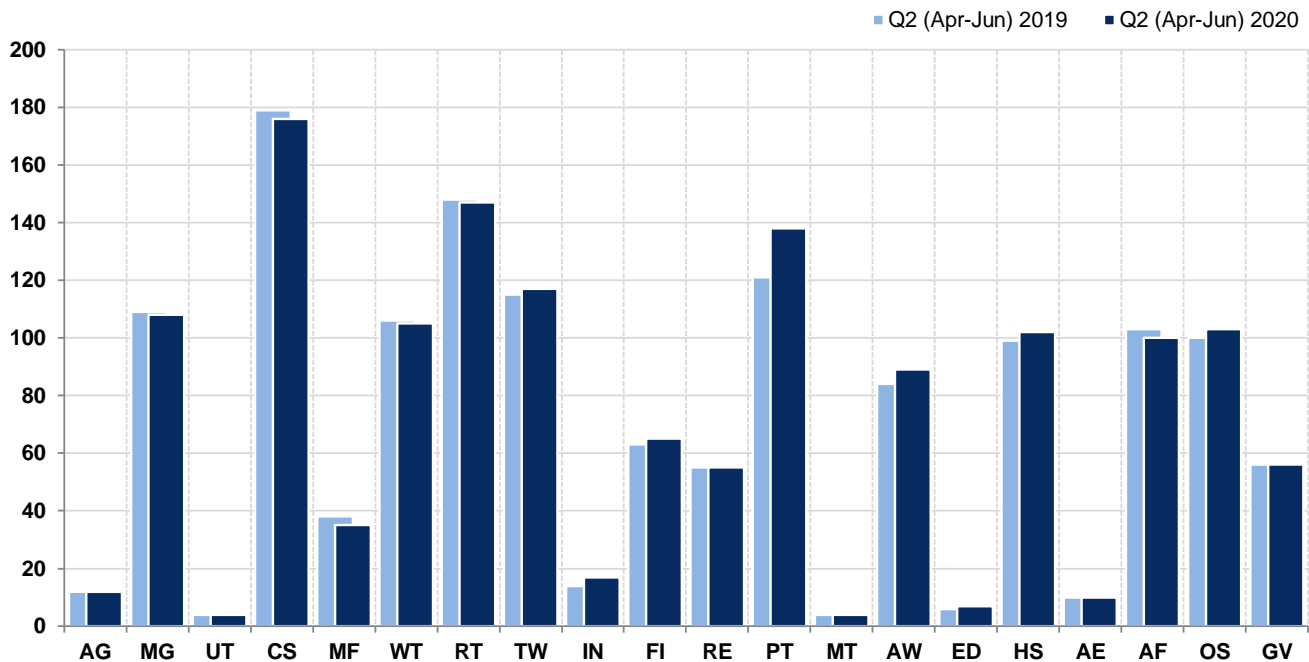
Sources: QCEW Labor Market Information Center, Job Service ND, Quarterly Census of Employment and Wages

Data current as of November 4, 2020. Data are not seasonally adjusted. Asterisks (\*\*\*) indicate data cannot be released due to reliability, availability or confidentiality restrictions.

# STARK COUNTY AREA PROFILE

## BUSINESS ESTABLISHMENTS BY INDUSTRY

[QCEW Q2 (APR-JUN) 2020]



Stark County						
Abbr	[2-Digit NAICS Code] Industry	Q2 2019 Business Estab.	Q2 2020 Business Estab.	Numeric Change	Percent Change	Percent Share of Total
AG	[11] Agriculture, Forestry, Fishing and Hunting	12	12	0	0.0	0.8
MG	[21] Mining, Quarrying, and Oil and Gas Extraction	109	108	-1	-0.9	7.4
UT	[22] Utilities	4	4	0	0.0	0.3
CS	[23] Construction	179	176	-3	-1.7	12.1
MF	[31-33] Manufacturing	38	35	-3	-7.9	2.4
WT	[42] Wholesale Trade	106	105	-1	-0.9	7.2
RT	[44-45] Retail Trade	148	147	-1	-0.7	10.1
TW	[48-49] Transportation and Warehousing	115	117	+2	+1.7	8.1
IN	[51] Information	14	17	+3	+21.4	1.2
FI	[52] Finance and Insurance	63	65	+2	+3.2	4.5
RE	[53] Real Estate and Rental and Leasing	55	55	0	0.0	3.8
PT	[54] Professional and Technical Services	121	138	+17	+14.0	9.5
MT	[55] Management of Companies and Enterprises	4	4	0	0.0	0.3
AW	[56] Administrative and Waste Services	84	89	+5	+6.0	6.1
ED	[61] Educational Services	6	7	+1	+16.7	0.5
HS	[62] Health Care and Social Assistance	99	102	+3	+3.0	7.0
AE	[71] Arts, Entertainment, and Recreation	10	10	0	0.0	0.7
AF	[72] Accommodation and Food Services	103	100	-3	-2.9	6.9
OS	[81] Other Services (except Government)	100	103	+3	+3.0	7.1
GV	Government	56	56	0	0.0	3.9
<b>TL</b>	<b>Total, All Industries</b>	<b>1,426</b>	<b>1,450</b>	<b>+24</b>	<b>+1.7</b>	<b>100.0</b>

[\*Government\* includes establishments for public schools, colleges, universities, and hospitals and tribal entities]

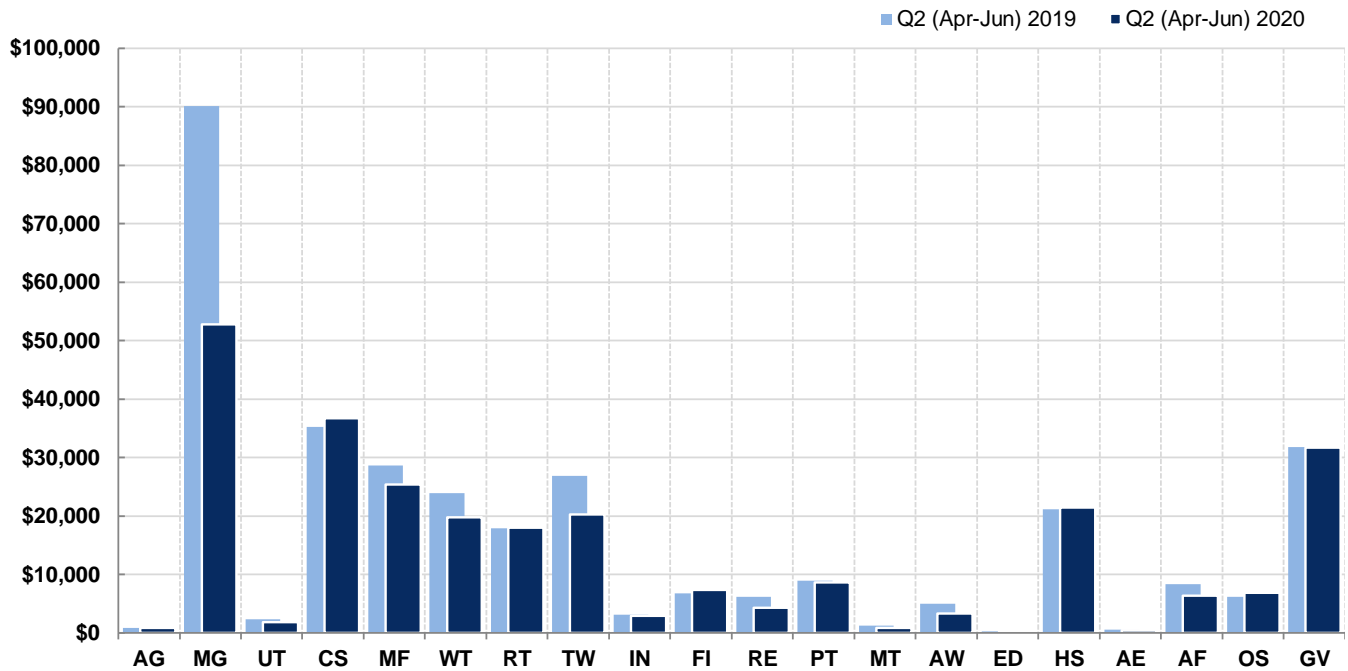
Sources: QCEW Labor Market Information Center, Job Service ND, Quarterly Census of Employment and Wages

Data current as of November 4, 2020. Data are not seasonally adjusted. Asterisks (\*\*\*) indicate data cannot be released due to reliability, availability or confidentiality restrictions.

# STARK COUNTY AREA PROFILE

TOTAL WAGES (in thousands \$) BY INDUSTRY

[QCEW Q2 (APR-JUN) 2020]



Stark County						
Abbr	[2-Digit NAICS Code] Industry	Q2 2019 Total Wages	Q2 2020 Total Wages	Numeric Change	Percent Change	Percent Share of Total
AG	[11] Agriculture, Forestry, Fishing and Hunting	823.0	832.8	+9.8	+1.2	0.3
MG	[21] Mining, Quarrying, and Oil and Gas Extraction	90,118.8	52,736.5	-37,382.2	-41.5	19.5
UT	[22] Utilities	2,309.1	1,831.5	-477.6	-20.7	0.7
CS	[23] Construction	35,188.7	36,750.8	+1,562.2	+4.4	13.6
MF	[31-33] Manufacturing	28,587.9	25,397.6	-3,190.3	-11.2	9.4
WT	[42] Wholesale Trade	23,880.2	19,791.9	-4,088.3	-17.1	7.3
RT	[44-45] Retail Trade	17,903.2	18,037.5	+134.3	+0.8	6.7
TW	[48-49] Transportation and Warehousing	26,823.2	20,294.5	-6,528.7	-24.3	7.5
IN	[51] Information	3,132.2	2,908.6	-223.6	-7.1	1.1
FI	[52] Finance and Insurance	6,727.7	7,358.9	+631.2	+9.4	2.7
RE	[53] Real Estate and Rental and Leasing	6,131.9	4,307.7	-1,824.2	-29.7	1.6
PT	[54] Professional and Technical Services	8,923.9	8,651.3	-272.6	-3.1	3.2
MT	[55] Management of Companies and Enterprises	1,245.8	846.6	-399.2	-32.0	0.3
AW	[56] Administrative and Waste Services	4,958.7	3,288.3	-1,670.4	-33.7	1.2
ED	[61] Educational Services	296.3	292.1	-4.1	-1.4	0.1
HS	[62] Health Care and Social Assistance	21,138.9	21,466.8	+327.9	+1.6	7.9
AE	[71] Arts, Entertainment, and Recreation	543.3	448.7	-94.6	-17.4	0.2
AF	[72] Accommodation and Food Services	8,356.2	6,402.8	-1,953.5	-23.4	2.4
OS	[81] Other Services (except Government)	6,119.7	6,887.6	+767.9	+12.5	2.5
GV	Government	31,775.7	31,669.2	-106.5	-0.3	11.7
<b>TL</b>	<b>Total, All Industries</b>	<b>324,984.2</b>	<b>270,201.7</b>	<b>-54,782.5</b>	<b>-16.9</b>	<b>100.0</b>

[Government\* includes wages for public schools, colleges, universities, and hospitals and tribal entities; change calculations based on unrounded data]

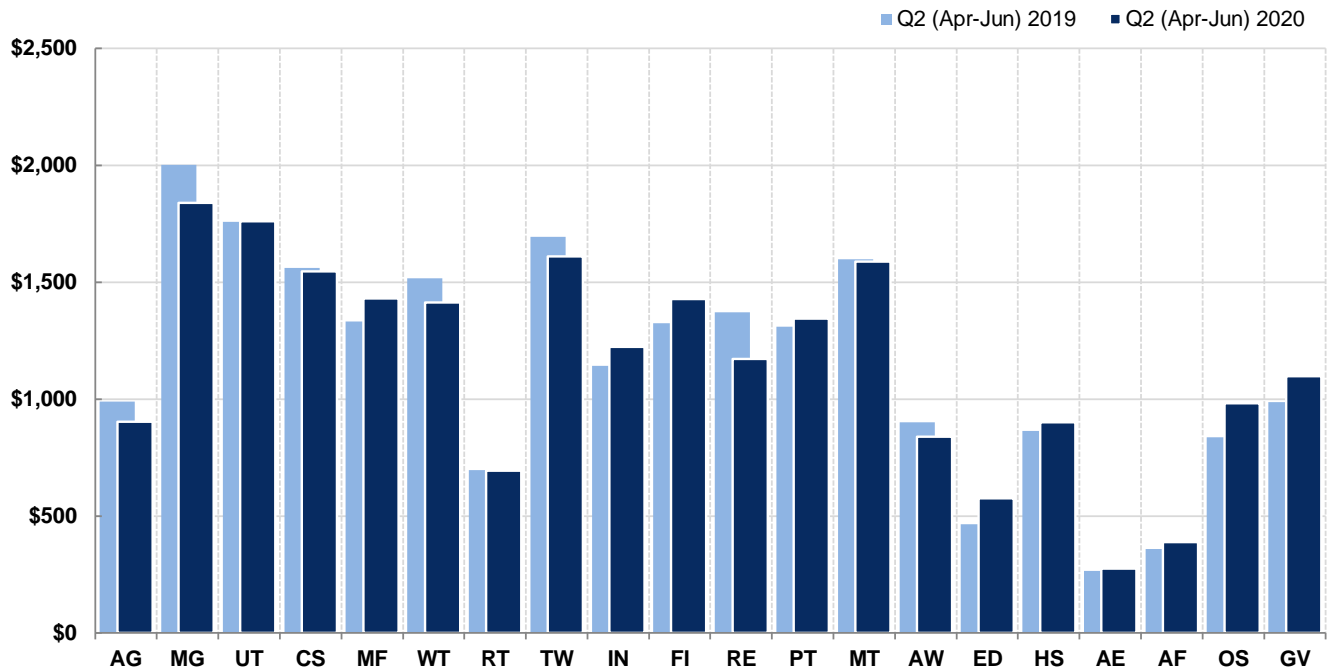
Sources: QCEW Labor Market Information Center, Job Service ND, Quarterly Census of Employment and Wages

Data current as of November 4, 2020. Data are not seasonally adjusted. Asterisks (\*\*\*) indicate data cannot be released due to reliability, availability or confidentiality restrictions.

# STARK COUNTY AREA PROFILE

AVERAGE WEEKLY WAGE (\$) BY INDUSTRY

[QCEW Q2 (APR-JUN) 2020]



Stark County						Percent
Abbr	[2-Digit NAICS Code] Industry	Q2 2019 Avg Wkly Wage (\$)	Q2 2020 Avg Wkly Wage (\$)	Numeric Change	Percent Change	Above/ Below Average
AG	[11] Agriculture, Forestry, Fishing and Hunting	989	902	-87	-8.8	-24.8
MG	[21] Mining, Quarrying, and Oil and Gas Extraction	2,001	1,839	-162	-8.1	+53.3
UT	[22] Utilities	1,759	1,761	+2	+0.1	+46.8
CS	[23] Construction	1,562	1,547	-15	-1.0	+28.9
MF	[31-33] Manufacturing	1,331	1,430	+99	+7.4	+19.2
WT	[42] Wholesale Trade	1,516	1,412	-104	-6.9	+17.7
RT	[44-45] Retail Trade	696	693	-3	-0.4	-42.3
TW	[48-49] Transportation and Warehousing	1,695	1,609	-86	-5.1	+34.1
IN	[51] Information	1,142	1,223	+81	+7.1	+1.9
FI	[52] Finance and Insurance	1,324	1,429	+105	+7.9	+19.1
RE	[53] Real Estate and Rental and Leasing	1,371	1,171	-200	-14.6	-2.4
PT	[54] Professional and Technical Services	1,310	1,344	+34	+2.6	+12.0
MT	[55] Management of Companies and Enterprises	1,597	1,588	-9	-0.6	+32.3
AW	[56] Administrative and Waste Services	900	838	-62	-6.9	-30.2
ED	[61] Educational Services	465	576	+111	+23.9	-52.0
HS	[62] Health Care and Social Assistance	863	901	+38	+4.4	-24.9
AE	[71] Arts, Entertainment, and Recreation	266	276	+10	+3.8	-77.0
AF	[72] Accommodation and Food Services	359	389	+30	+8.4	-67.6
OS	[81] Other Services (except Government)	836	983	+147	+17.6	-18.1
GV	Government	986	1,097	+111	+11.3	-8.6
<b>TL</b>	<b>Total, All Industries</b>	<b>1,231</b>	<b>1,200</b>	<b>-31</b>	<b>-2.5</b>	<b>0.0</b>

[Government\* includes wages for public schools, colleges, universities, and hospitals and tribal entities]

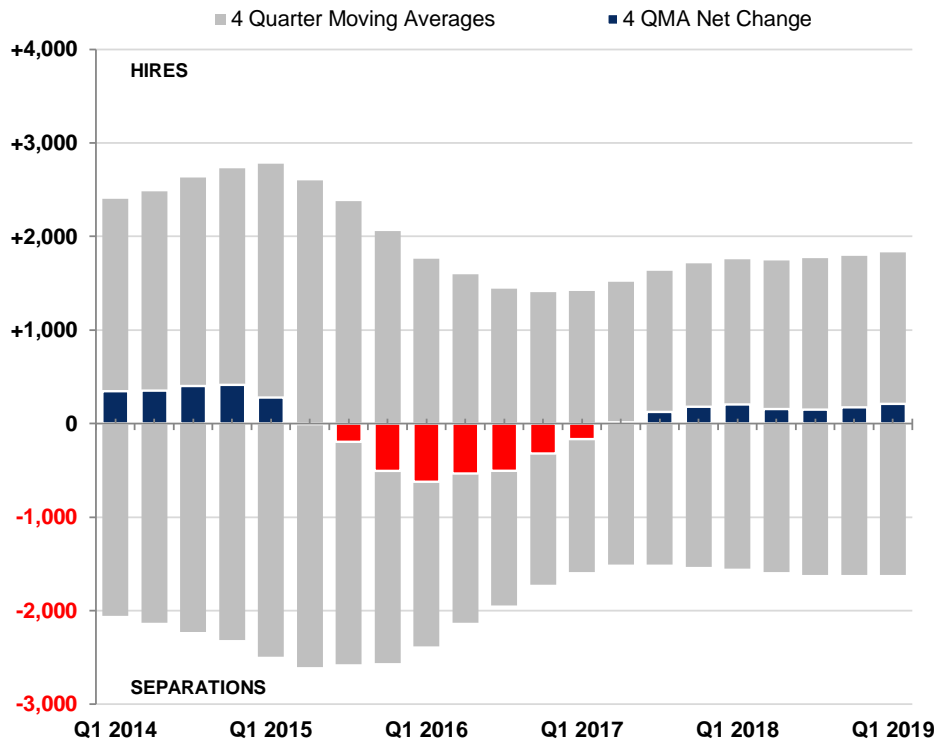
Sources: QCEW Labor Market Information Center, Job Service ND, Quarterly Census of Employment and Wages

Data current as of November 4, 2020. Data are not seasonally adjusted. Asterisks (\*\*\*) indicate data cannot be released due to reliability, availability or confidentiality restrictions.

# STARK COUNTY AREA PROFILE

## WORKER HIRES, SEPARATIONS, AND NET CHANGE

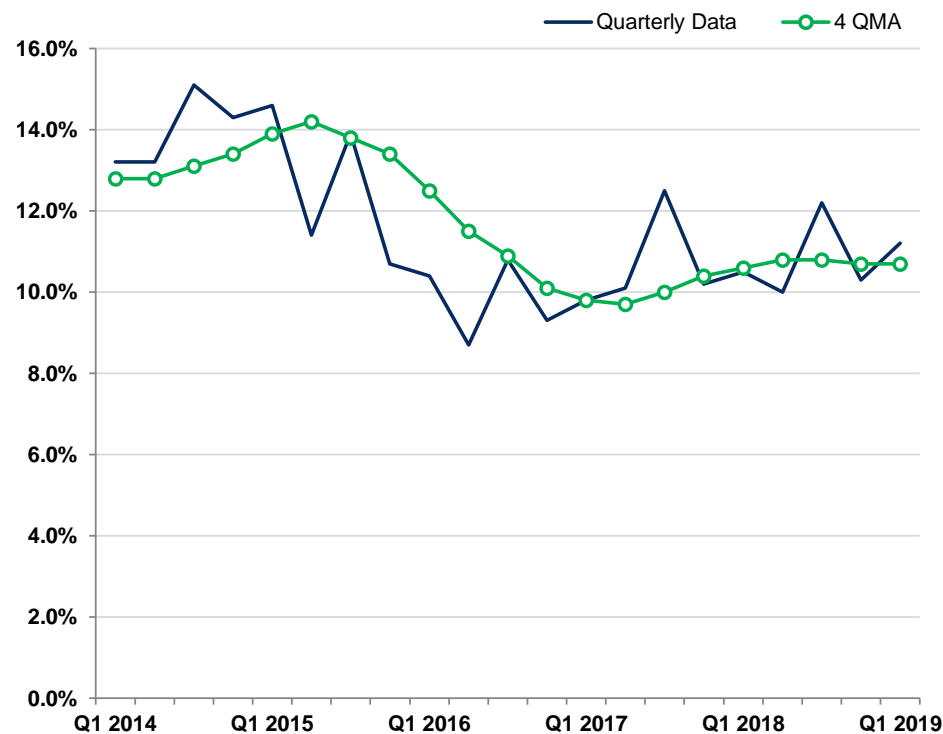
[LED Q1 (JAN-MAR) 2019]



Hires	1,740
Separations	1,320
<b>1-Year Percent Change</b>	
Hires	+9.2
Separations	+0.3
<b>5-Year Percent Change</b>	
Hires	-26.1
Separations	-26.3
<b>Net Change</b>	
	+420
<b>4-Quarter Moving Average</b>	
Hires	1,832
Separations	1,620
<b>1-Year Percent Change</b>	
Hires	+4.4
Separations	+4.5
<b>5-Year Percent Change</b>	
Hires	-23.8
Separations	-21.2
<b>Net Change</b>	
	+212

## TURNOVER RATE (%)

[LED Q1 (JAN-MAR) 2019]



	11.2
<b>Same Quarter, 1 Year Ago</b>	10.5
<b>Same Quarter, 5 Years Ago</b>	13.2
<b>4-Quarter Moving Average</b>	10.7
<b>Same Quarter, 1 Year Ago</b>	10.6
<b>Same Quarter, 5 Years Ago</b>	12.8

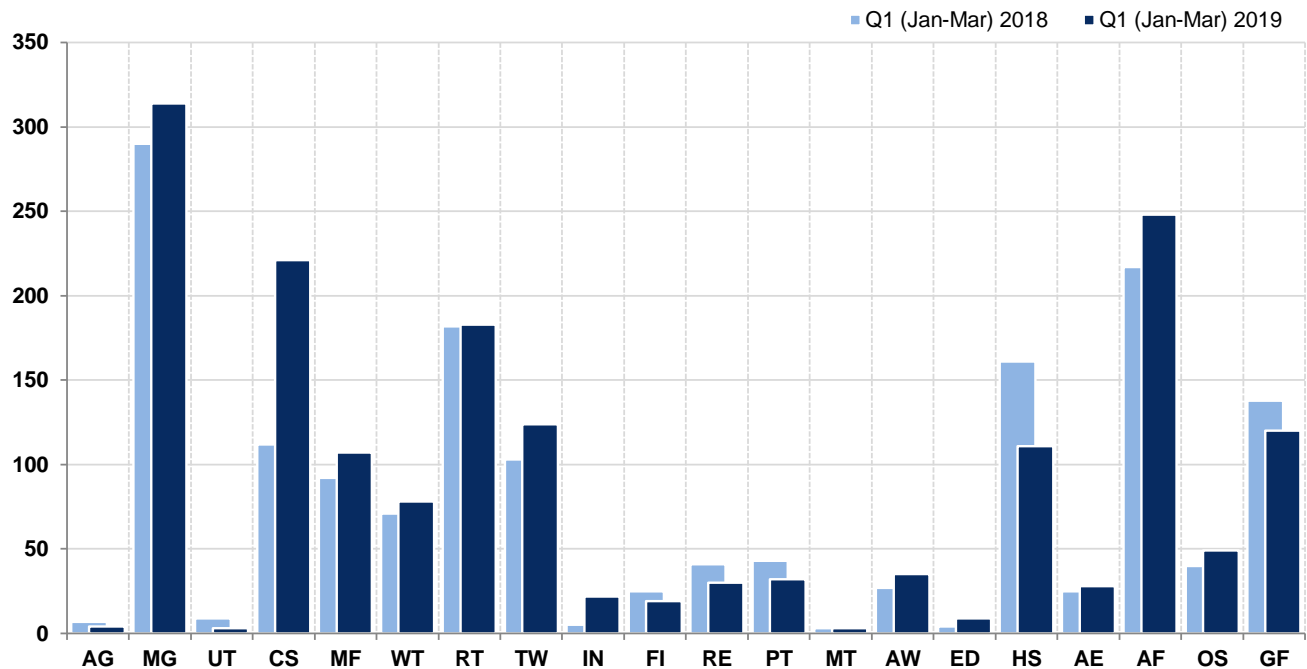
Sources: LED U.S. Census Bureau, Local Employment Dynamics

Data current as of November 4, 2020. Data are not seasonally adjusted. Asterisks (\*\*\*) indicate data cannot be released due to reliability, availability or confidentiality restrictions.

# STARK COUNTY AREA PROFILE

## WORKER HIRES BY INDUSTRY

[LED Q1 (JAN-MAR) 2019]



Stark County						
Abbr	[2-Digit NAICS Code] Industry	Q1 2018 Hires	Q1 2019 Hires	Numeric Change	Percent Change	Hires Rate (%)
AG	[11] Agriculture, Forestry, Fishing and Hunting	7	4	-3	-42.9	8.0
MG	[21] Mining, Quarrying, and Oil and Gas Extraction	290	314	+24	+8.3	11.5
UT	[22] Utilities	9	3	-6	-66.7	3.4
CS	[23] Construction	112	221	+109	+97.3	18.1
MF	[31-33] Manufacturing	92	107	+15	+16.3	7.0
WT	[42] Wholesale Trade	71	78	+7	+9.9	7.7
RT	[44-45] Retail Trade	182	183	+1	+0.5	11.4
TW	[48-49] Transportation and Warehousing	103	124	+21	+20.4	13.3
IN	[51] Information	5	22	+17	+340.0	9.6
FI	[52] Finance and Insurance	25	19	-6	-24.0	5.2
RE	[53] Real Estate and Rental and Leasing	41	30	-11	-26.8	12.9
PT	[54] Professional and Technical Services	43	32	-11	-25.6	7.7
MT	[55] Management of Companies and Enterprises	3	3	0	0.0	4.8
AW	[56] Administrative and Waste Services	27	35	+8	+29.6	10.9
ED	[61] Educational Services	4	9	+5	+125.0	19.1
HS	[62] Health Care and Social Assistance	161	111	-50	-31.1	6.5
AE	[71] Arts, Entertainment, and Recreation	25	28	+3	+12.0	21.2
AF	[72] Accommodation and Food Services	217	248	+31	+14.3	19.4
OS	[81] Other Services (except Government)	40	49	+9	+22.5	10.0
GF	Government (except Federal Govt)	138	120	-18	-13.0	6.3
<b>TL</b>	<b>Total, All Industries</b>	<b>1,593</b>	<b>1,740</b>	<b>+147</b>	<b>+9.2</b>	<b>10.6</b>

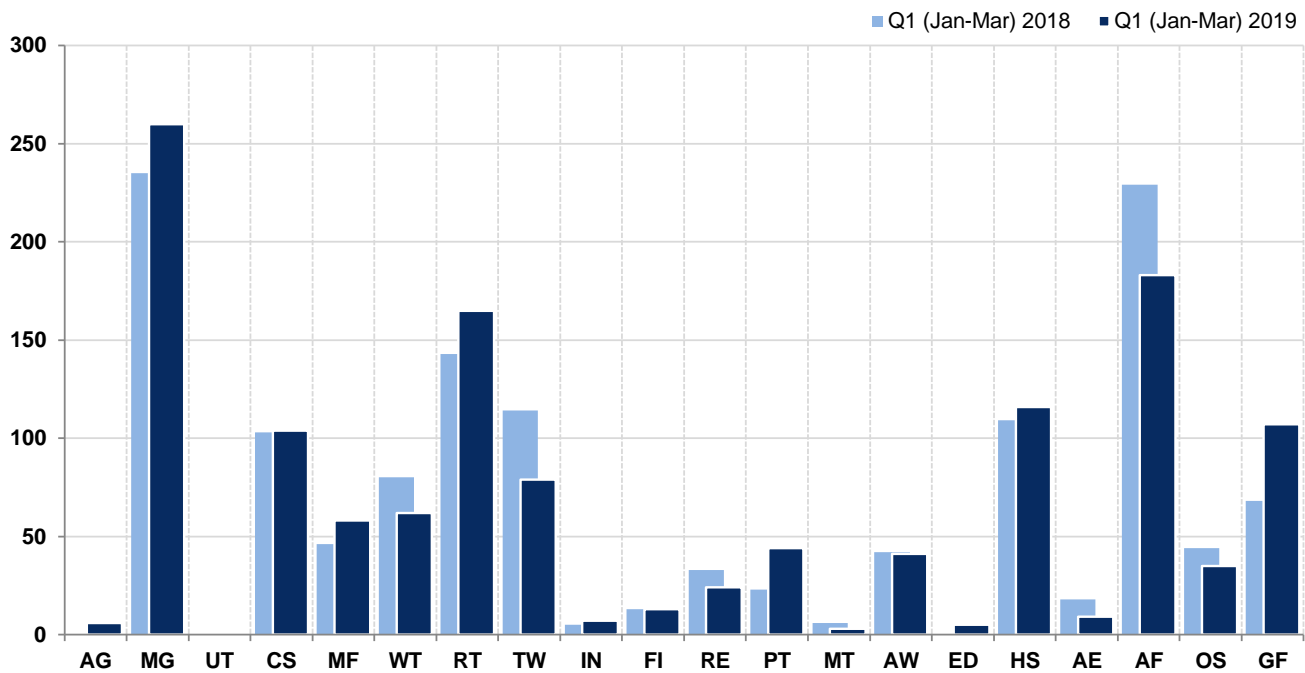
Sources: LED U.S. Census Bureau, Local Employment Dynamics

Data current as of November 4, 2020. Data are not seasonally adjusted. Asterisks (\*\*\*) indicate data cannot be released due to reliability, availability or confidentiality restrictions.

# STARK COUNTY AREA PROFILE

## WORKER SEPARATIONS BY INDUSTRY

[LED Q1 (JAN-MAR) 2019]



Stark County							Separations Rate (%)
Abbr	[2-Digit NAICS Code] Industry	Q1 2018 Separations	Q1 2019 Separations	Numeric Change	Percent Change		
AG	[11] Agriculture, Forestry, Fishing and Hunting	***	6	***	***	12.0	
MG	[21] Mining, Quarrying, and Oil and Gas Extraction	235	260	+25	+10.6	9.5	
UT	[22] Utilities	***	***	***	***	***	
CS	[23] Construction	103	104	+1	+1.0	8.5	
MF	[31-33] Manufacturing	46	58	+12	+26.1	3.8	
WT	[42] Wholesale Trade	80	62	-18	-22.5	6.2	
RT	[44-45] Retail Trade	143	165	+22	+15.4	10.3	
TW	[48-49] Transportation and Warehousing	114	79	-35	-30.7	8.5	
IN	[51] Information	5	7	+2	+40.0	3.1	
FI	[52] Finance and Insurance	13	13	0	0.0	3.6	
RE	[53] Real Estate and Rental and Leasing	33	24	-9	-27.3	10.3	
PT	[54] Professional and Technical Services	23	44	+21	+91.3	10.5	
MT	[55] Management of Companies and Enterprises	6	3	-3	-50.0	4.8	
AW	[56] Administrative and Waste Services	42	41	-1	-2.4	12.8	
ED	[61] Educational Services	***	5	***	***	10.6	
HS	[62] Health Care and Social Assistance	109	116	+7	+6.4	6.8	
AE	[71] Arts, Entertainment, and Recreation	18	9	-9	-50.0	6.8	
AF	[72] Accommodation and Food Services	229	183	-46	-20.1	14.3	
OS	[81] Other Services (except Government)	44	35	-9	-20.5	7.2	
GF	Government (except Federal Govt)	68	107	+39	+57.4	5.6	
<b>TL</b>	<b>Total, All Industries</b>	<b>1,316</b>	<b>1,320</b>	<b>+4</b>	<b>+0.3</b>	<b>8.1</b>	

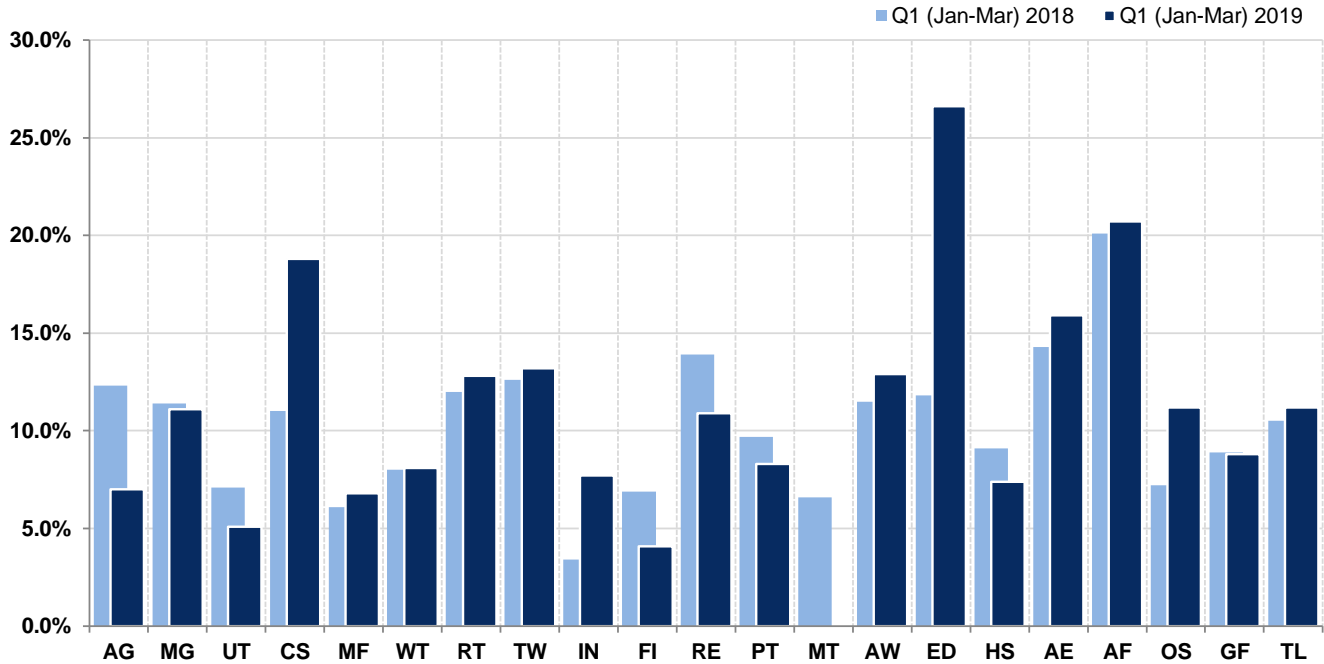
Sources: LED U.S. Census Bureau, Local Employment Dynamics

Data current as of November 4, 2020. Data are not seasonally adjusted. Asterisks (\*\*\*) indicate data cannot be released due to reliability, availability or confidentiality restrictions.

# STARK COUNTY AREA PROFILE

## TURNOVER RATE (%) BY INDUSTRY

[LED Q1 (JAN-MAR) 2019]



Stark County			
Abbr	[2-Digit NAICS Code] Industry	Q1 2018 Turnover Rate (%)	Q1 2019 Turnover Rate (%)
AG	[11] Agriculture, Forestry, Fishing and Hunting	12.3	7.0
MG	[21] Mining, Quarrying, and Oil and Gas Extraction	11.4	11.1
UT	[22] Utilities	7.1	5.1
CS	[23] Construction	11.0	18.8
MF	[31-33] Manufacturing	6.1	6.8
WT	[42] Wholesale Trade	8.0	8.1
RT	[44-45] Retail Trade	12.0	12.8
TW	[48-49] Transportation and Warehousing	12.6	13.2
IN	[51] Information	3.4	7.7
FI	[52] Finance and Insurance	6.9	4.1
RE	[53] Real Estate and Rental and Leasing	13.9	10.9
PT	[54] Professional and Technical Services	9.7	8.3
MT	[55] Management of Companies and Enterprises	6.6	***
AW	[56] Administrative and Waste Services	11.5	12.9
ED	[61] Educational Services	11.8	26.6
HS	[62] Health Care and Social Assistance	9.1	7.4
AE	[71] Arts, Entertainment, and Recreation	14.3	15.9
AF	[72] Accommodation and Food Services	20.1	20.7
OS	[81] Other Services (except Government)	7.2	11.2
GF	Government (except Federal Govt)	8.9	8.8
TL	<b>Total, All Industries</b>	<b>10.5</b>	<b>11.2</b>

Sources: LED U.S. Census Bureau, Local Employment Dynamics

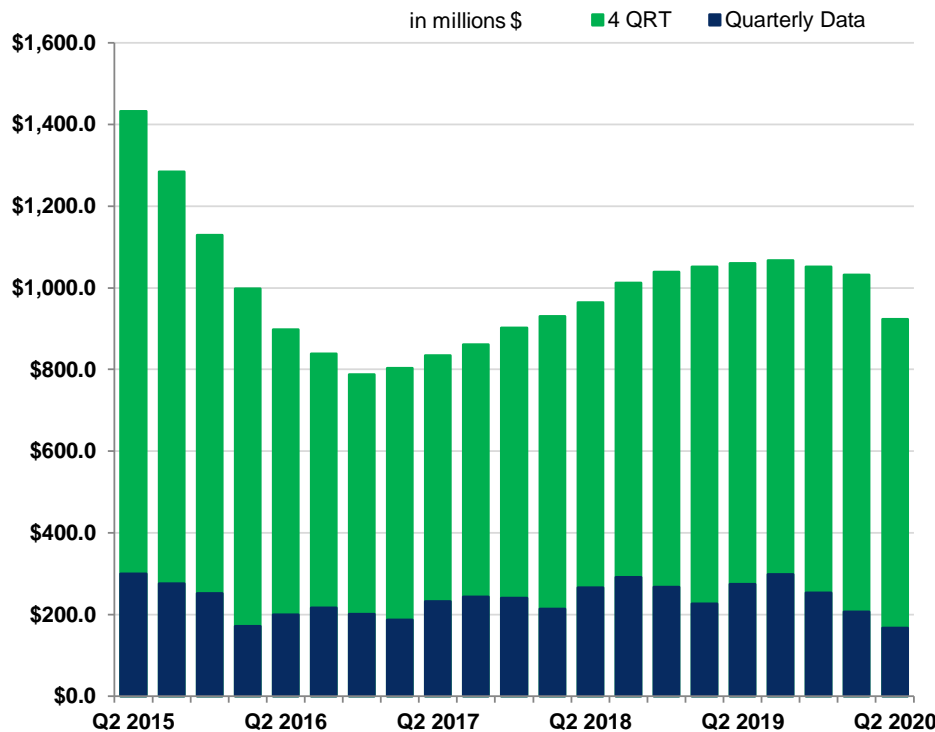
Data current as of November 4, 2020. Data are not seasonally adjusted. Asterisks (\*\*\*) indicate data cannot be released due to reliability, availability or confidentiality restrictions.



# STARK COUNTY AREA PROFILE

## TAXABLE SALES & PURCHASES (\$)

[TAX Q2 (APR-JUN) 2020]



167,035,668
<b>1-Year Numeric Change</b>
-107,531,510
<b>1-Year Percent Change</b>
-39.2
<b>5-Year Numeric Change</b>
-133,070,996
<b>5-Year Percent Change</b>
-44.3
<b>4-Quarter Rolling Total</b>
923,817,684
<b>1-Year Numeric Change</b>
-136,017,169
<b>1-Year Percent Change</b>
-12.8
<b>5-Year Numeric Change</b>
-508,954,838
<b>5-Year Percent Change</b>
-35.5

## TOP 10 LARGEST EMPLOYERS

[QCEW 2019]

### Stark County

1	DICKINSON PUBLIC SCHOOL DISTRICT	Educational Services
2	STEFFES SOLUTIONS	Primary Metal Manufacturing
3	KILLDEER MOUNTAIN MANUFACTURING	Computer and Electronic Product Manufacturing
4	WAL-MART	General Merchandise Stores
5	[Nondisclosable]	----
6	CHI ST ALEXIUS HEALTH - DICKINSON	Hospitals
7	DICKINSON STATE UNIVERSITY	Educational Services
8	[Nondisclosable]	----
9	[Nondisclosable]	----
10	[Nondisclosable]	----

[Updated annually, employer rankings are based on the number of monthly payroll jobs reported to the Quarterly Census of Employment and Wages (QCEW) program. The QCEW program uses the monthly jobs data to calculate an average annual employment number for each employer of the referenced calendar year and the results are ranked within eligible geographic areas. A county is eligible to be surveyed if its average employment levels are greater than or equal to 1,000, based on the county's latest five-year moving average. A five-year moving average is used to avoid having counties close to the eligibility cutoff in any one year from popping in or out of the survey, which provides for a more stable selection of eligible counties between survey cycles. While the eligibility cutoff for a county to be surveyed is based on a five-year moving average, the final rankings are based on the employer's latest calendar year average annual employment data. A surveyed county is eligible to be published if at least 50 percent of the ranked employers have given permission to be published, otherwise lists for those counties will not be published. Results are limited to those employers participating in the state's unemployment insurance program, which includes more than 95 percent of all employers in the state. Employers gave their written consent for their company's name to be published on this list. If permission was not obtained, 'Nondisclosable' was substituted for the company name]

Sources: QCEW Labor Market Information Center, Job Service ND, Quarterly Census of Employment and Wages; TAX North Dakota Office of State Tax Commissioner

Data current as of November 4, 2020. Data are not seasonally adjusted. Asterisks (\*\*\*) indicate data cannot be released due to reliability, availability or confidentiality restrictions.

This report was produced either in whole or in part with Department of Labor-funded Workforce Information Grants (WIGS).

## AMERICAN COMMUNITY SURVEY (ACS)

The American Community Survey, sometimes referred to as the ACS, is a nationwide survey that produces population and housing characteristics data, similar to the long-form questionnaire used in Census 2000. The ACS produces estimates for small areas and small population groups. The ACS is a continuous survey, in which each month a sample of roughly 290,000 housing unit addresses receive a questionnaire (about 3.5 million addresses are surveyed each year). The ACS produces data estimates on the nation's demographic, social, economic, and housing characteristics. The ACS estimates are not the same as the 2010 Census population counts. The purpose of the ACS is not to count every person in a community or town, but rather to provide a portrait of a community's characteristics. ACS results are available for three time periods—1-year or 5-year—depending on the population size of a geographic area (5-year estimates are available for all geographies). This report uses the latest 5-year estimates.

**AVERAGE COMMUTE TIME TO WORK.** Average commute time to work (in minutes) is the average travel time that workers usually took to get from home to work (one way). This measure is obtained by dividing the total number of minutes taken to get from home to work (the aggregate travel time) by the number of workers 16 years old and over who did not work at home. Average travel time is rounded to the nearest tenth of a minute.

**CLASS OF WORKER.** Class of worker is a classification that categorizes workers according to the type of ownership of the employing organization. Private wage and salary workers include employees who worked for wages, salary, commission, tips, pay-in-kind, or piece rates for a private, for-profit employer or a private not-for-profit, tax-exempt or charitable organization. Self-employed workers whose business was incorporated are included with private wage and salary workers because they are paid employees of their own companies. Government workers include employees of any local, state, or federal governmental unit regardless of the activity of the particular agency. Self-employed workers include people who worked for profit or fees in their own unincorporated business, profession, or trade, or who operated a farm. Unpaid family workers include people who worked without pay in a business or on a farm operated by a relative.

**EDUCATIONAL ATTAINMENT.** Educational attainment is the highest level of education completed in terms of the highest degree or the highest level of schooling completed.

**HEALTH INSURANCE STATUS.** Health insurance status is an indicator of a population's health insurance coverage. Health insurance coverage is defined as plans and programs, either public or private, that provide comprehensive health coverage. Plans that provide insurance for specific conditions or situations such as cancer and long-term care policies are not considered coverage. Likewise, other types of insurance like dental, vision, life, and disability insurance are not considered health insurance coverage. People who had no reported health coverage, or those whose only health coverage was Indian Health Service, were considered uninsured.

**HOMEOWNER VACANCY RATE.** The homeowner vacancy rate is the proportion of the homeowner inventory that is vacant "for sale." It is computed by dividing the number of vacant units "for sale only" by the sum of the owner-occupied units, vacant units that are "for sale only," and vacant units that have been sold but not yet occupied, and then multiplying by 100. This measure is rounded to the nearest tenth.

**HOUSEHOLDS.** A household includes all the people who occupy a housing unit. The occupants may be a single family, one person living alone, two or more families living together, or any other group of related or unrelated people who share living arrangements as a single amount. A family household consists of a householder and one or more other people living in the same household who are related to the householder by birth, marriage, or adoption. All people in a household who are related to the householder are regarded as members of his or her family. A family household may contain people not related to the householder, but those people are not included as part of the householder's family in tabulations. A nonfamily household consists of a householder living alone or with nonrelatives only. Unmarried couples households, whether opposite-sex or same-sex, with no relatives of the householder present are tabulated in nonfamily households.

**LABOR FORCE PARTICIPATION RATE.** The labor force participation rate represents the proportion of the civilian population 16 years and over that is in the labor force, either working or actively seeking work.

**MEDIAN HOUSEHOLD INCOME.** Median household income includes the income of the householder and all other individuals 15 years old and over in the household, whether they are related to the householder or not. Because many households consist of only one person, average household income is usually less than average family income. In compiling statistics on family income, the incomes of all members 15 years old and over related to the householder are summed and treated as a single amount. The median divides the income distribution into two equal parts: one-half of the cases falling below the median income and one-half above the median. For households and families, the median income is based on the distribution of the total number of households and families including those with no income. The median income for individuals is based on individuals 15 years old and over with income.

**MEDIAN MONTHLY OWNER COSTS FOR HOUSING UNITS.** Median monthly owner costs consist of selected monthly owner costs such as payments for mortgages, deeds of trust, contracts to purchase, or similar debts on the property (including payments for the first mortgage, second mortgages, home equity loans, and other junior mortgages); real estate taxes; fire, hazard, and flood insurance on the property; utilities (electricity, gas, and water and sewer); and fuels (oil, coal, kerosene, wood, etc.). It also includes, where appropriate, the monthly condominium fee for condominiums and mobile home costs (personal property taxes, site rent, registration fees, and license fees). Selected monthly owner costs were tabulated for all owner-occupied units, and usually are shown separately for units "with a mortgage" and for units "not mortgaged." The median divides the selected monthly owner costs distribution into two equal parts: one-half of the cases falling below the median selected monthly owner costs and one-half above the median.

## AMERICAN COMMUNITY SURVEY (ACS) cont'd

**MEDIAN RENT FOR OCCUPIED UNITS PAYING RENT.** Median rent consists of the gross rent which is the contract rent plus the estimated average monthly cost of utilities (electricity, gas, and water and sewer) and fuels (oil, coal, kerosene, wood, etc.) if these are paid by the renter (or paid for the renter by someone else). Gross rent is intended to eliminate differentials that result from varying practices with respect to the inclusion of utilities and fuels as part of the rental payment. The estimated costs of water and sewer, and fuels are reported on a 12-month basis but are converted to monthly figures for the tabulations. Median gross rent divides the gross rent distribution into two equal parts: one-half of the cases falling below the median gross rent and one-half above the median.

**MEDIAN VALUE OF OWNER-OCCUPIED HOUSING UNITS.** Median value is the respondent's estimate of how much the property (house and lot, mobile home and lot (if lot owned), or condominium unit) would sell for if it were for sale. If the house was owned or being bought, but the land on which it sits was not, the respondent was asked to estimate the combined value of the house and the land. The median divides the value distribution into two equal parts: one-half of the cases falling below the median value of the property (house and lot, mobile home and lot (if lot owned), or condominium unit) and one-half above the median. Values are rounded to the nearest hundred dollars.

**MOBILITY STATUS.** Mobility status is an indicator of a population's move rate which tracks residential status one year prior.

**MONTHLY HOUSING COSTS EQUAL TO OR GREATER THAN 30 PERCENT OF HOUSEHOLD INCOME.** This indicator offers an excellent measure of housing affordability and excessive shelter costs. The information on selected monthly owner costs as a percentage of household income is the computed ratio of selected monthly owner costs to monthly household income. The ratio was computed separately for each unit and rounded to the nearest whole percentage. The data are tabulated only for owner-occupied units. For renters, gross rent as a percentage of household income is a computed ratio of monthly gross rent to monthly household income (total household income divided by 12). The ratio is computed separately for each unit and is rounded to the nearest tenth. Units for which no rent is paid and units occupied by households that reported no income or a net loss comprise the category "Not computed." A median divides the distribution into two equal parts: one-half of the cases falling below the median and one-half above the median.

**MORTGAGE STATUS OF OWNER-OCCUPIED HOUSING UNITS.** "Mortgage" refers to all forms of debt where the property is pledged as security for repayment of the debt, including deeds of trust; trust deeds; contracts to purchase; land contracts; junior mortgages; and home equity loans. The category "not mortgaged" is comprised of housing units owned free and clear of debt.

**OWNER-OCCUPIED HOUSING UNITS.** A housing unit is owner-occupied if the owner or co-owner lives in the unit, even if it is mortgaged or not fully paid for. The owner or co-owner must live in the unit.

**PLACE OF BIRTH.** Place of birth is the geographic area a person was born.

**POVERTY STATUS.** The Census Bureau uses a set of dollar value thresholds that vary by family size and composition to determine who is in poverty. To determine a person's poverty status, one compares the person's total family income in the last 12 months with the poverty threshold appropriate for that person's family size and composition. If the total income of that person's family is less than the threshold appropriate for that family, then the person is considered "below the poverty level," together with every member of his or her family. If a person is not living with anyone related by birth, marriage, or adoption, then the person's own income is compared with his or her poverty threshold. The total number of people below the poverty level is the sum of people in families and the number of unrelated individuals with incomes in the last 12 months below the poverty threshold.

**RENTAL VACANCY RATE.** The rental vacancy rate is the proportion of the rental inventory that is vacant "for rent." It is computed by dividing the number of vacant units "for rent" by the sum of the renter-occupied units, vacant units that are "for rent," and vacant units that have been rented but not yet occupied, and then multiplying by 100. This measure is rounded to the nearest tenth.

**RENTER-OCCUPIED HOUSING UNITS.** All occupied housing units which are not owner-occupied, whether they are rented or occupied without payment of rent, are classified as renter-occupied.

**USUAL HOURS WORKED PER WEEK.** Usual hours worked per week is the number of hours an employed person 16 to 64 years worked per week (or an approximate average) in the majority of the weeks worked in the past 12 months.

**VACANT HOUSING UNITS.** A housing unit is vacant if no one is living in it at the time of interview. Units occupied at the time of interview entirely by persons who are staying two months or less and who have a more permanent residence elsewhere are considered to be temporarily occupied, and are classified as "vacant." New units not yet occupied are classified as vacant housing units if construction has reached a point where all exterior windows and doors are installed and final usable floors are in place. Vacant units are excluded from the housing inventory if they are open to the elements, that is, the roof, walls, windows, and/or doors no longer protect the interior from the elements. Also excluded are vacant units with a sign that they are condemned or they are to be demolished.

**WORKER OCCUPATIONS.** A worker's occupation describes the kind of work a person does on the job. It refers to a worker's current job or, if unemployed, a worker's most recent job in the last five years.

**WORK AT HOME.** Work at home is an indicator of the employed population 16 years and over working from home a majority of the time.

## LOCAL AREA UNEMPLOYMENT STATISTICS (LAUS)

The Local Area Unemployment Statistics (LAUS) program produces monthly and annual employment, unemployment, and labor force data for North Dakota and its many substate areas by place of residence. These estimates are key indicators of local economic conditions. The LAUS program is a federal-state cooperative effort between the Job Service North Dakota Labor Market Information Center and the U.S. Department of Labor's Bureau of Labor Statistics (BLS). Under the cooperative agreement, the BLS is responsible for the concepts, definitions, technical procedures, validation, and publication of the estimates that the Job Service North Dakota Labor Market Information Center prepares.

**LABOR FORCE.** The noninstitutionalized resident civilian population ages 16 and older either employed (part-time or full-time) or unemployed but actively seeking employment. The twelve-month moving average calculation is the average of the reference month plus the eleven most recent months.

**UNEMPLOYED.** All persons who had no employment during the reference week (week that includes the 12<sup>th</sup> of the month), were available for work, except for temporary illness, and had made specific efforts to find employment sometime during the 4-week period ending with the reference week. Persons who were waiting to be recalled to a job from which they had been laid off need not have been looking for work to be classified as unemployed. Not all persons 16 years and older are unemployed if not working. One must be actively looking and available for work in order to qualify. Otherwise, these persons are not in the labor force. Unemployed persons are always counted at their place of residence as opposed to place of previous employment, if any. Unemployed persons may be so by virtue of being laid off or having quit a job. A person does not have to be receiving unemployment benefits to be counted as unemployed. The twelve-month moving average calculation is the average of the reference month plus the eleven most recent months.

**UNEMPLOYMENT RATE.** The unemployment rate represents the number unemployed as a percent of the labor force. The twelve-month moving average calculation is the average of the reference month plus the eleven most recent months.

## LOCAL EMPLOYMENT DYNAMICS (LED)

Local Employment Dynamics (LED) is a voluntary partnership between state Labor Market Information (LMI) agencies and the U.S. Census Bureau to develop new information about local labor market conditions at low cost, with no added respondent burden, and with the same confidentiality protections afforded census and survey data. The state LMI agencies supply data from unemployment insurance wage records for workers and quarterly contribution reports for businesses. The data are merged with existing U.S. Census Bureau resident records to develop Quarterly Workforce Indicators (QWI). Due to methodology differences, LED data are not directly comparable to other labor market information generated by the U.S. Bureau of Labor Statistics and Job Service North Dakota.

**WORKER HIRES.** A worker hire can be either a new hire or a recall hire. New hires are the estimated number of workers who started a job that they had not held within the past year and recall hires are the estimated number of workers who returned to the same employer where they had worked within the previous year. The worker hire indicator is a measure of stable employment which are workers that started a job that lasted at least one full quarter with a given employer. The four-quarter moving average calculation is the average of the reference quarter plus the three most recent quarters.

**HIRES RATE.** The hires rate is calculated by taking all stable hires for a quarter and dividing by average full-quarter employment (stable employment), which differs from the QCEW definition of average quarterly employment. The four-quarter moving average calculation is the average of the reference quarter plus the three most recent quarters.

**WORKER SEPARATIONS.** Worker separations are the estimated number of workers whose job with a given employer ended in the specified quarter. The worker separation indicator is a measure of stable employment which are workers who had a job for at least a full quarter with a given employer and then the job ended. Voluntary separations (retirement, leaving for a new job) and involuntary separations (layoff, firing) cannot positively be identified separately. The four-quarter moving average calculation is the average of the reference quarter plus the three most recent quarters.

**SEPARATIONS RATE.** The separations rate is calculated by taking all stable separations for a quarter and dividing by average full-quarter employment (stable employment), which differs from the QCEW definition of average quarterly employment. The four-quarter moving average calculation is the average of the reference quarter plus the three most recent quarters.

**TURNOVER RATE.** The rate at which stable jobs begin and end. It is calculated by summing the number of stable hires in the reference quarter and stable separations in the next quarter, and dividing by the average full-quarter employment (stable employment). The four-quarter moving average calculation is the average of the reference quarter plus the three most recent quarters.

## NORTH DAKOTA OFFICE OF STATE TAX COMMISSIONER

**TAXABLE SALES AND PURCHASES.** Taxable sales and purchases are reported by businesses to North Dakota's Office of State Tax Commissioner on quarterly or monthly sales tax returns. Taxable sales are gross sales less nontaxable sales. Businesses must remit sales tax on taxable sales. Taxable purchases are taxable goods purchased by businesses for their own use on which they did not pay sales tax to suppliers. Also included are purchases of goods to be installed into real property by contractors who did not pay sales tax to suppliers. Businesses and contractors must pay use tax on these goods. Individuals purchasing items over the Internet on which sales tax is not charged, are obligated to report "taxable purchases" and remit the appropriate use tax. The four-quarter rolling total calculation is the summation of the reference quarter plus the three most recent quarters.

## NORTH DAKOTA DEPARTMENT OF PUBLIC INSTRUCTION

**K-12 PUBLIC SCHOOL FALL ENROLLMENT.** K-12 public school enrollment figures are reported by local school districts to the North Dakota Department of Public Instruction (DPI) on an annual basis. Data are extracted from DPI's School Finance Facts publication. Fall enrollment is defined as the number of students enrolled full time in one of the state's school districts on September 10th, the official count date. These data are strictly public school Fall enrollment figures and exclude counts from nonpublic or private schools, BIA/grant schools, and other state institution schools.

## ONLINE JOB OPENINGS REPORT (OJOR)

The Online Job Openings Report (OJOR) is a monthly summary of North Dakota job openings and active résumés and provides a timely overview of the latest supply/demand dynamic. The report involves the collection, processing, and dissemination of open and available online job openings posted by employers and active online résumés posted by job candidates. Job Service North Dakota compiles and publishes the OJOR.

**JOB OPENINGS.** Job openings include all open and available online openings during the reference period. This figure may include openings posted no more than 90 days prior but still active during the reference period, as well as new openings. The twelve-month moving average calculation is the average of the reference month plus the eleven most recent months.

**ACTIVE RÉSUMÉS.** Active résumés are all online résumés that have been created or otherwise modified during the reference period. This figure includes résumés posted no more than 90 days prior but still active during the reference period, as well as new résumés. Active résumés may include those created by out-of-state candidates. Candidates may post multiple online résumés so active résumés should not be interpreted as an individual candidate count. Active résumés are not necessarily an indicator of unemployment since candidates posting résumés may or may not be unemployed. The twelve-month moving average calculation is the average of the reference month plus the eleven most recent months.

**ACTIVE RÉSUMÉS PER JOB OPENING.** North Dakota's state-level and substate rates of active résumés per job opening are calculated by taking the number of in-state active résumés and dividing by job openings. In order to get a more localized measure of potential labor supply, only in-state active résumés (i.e. résumés tied to a North Dakota address) were used to calculate this rate; out-of-state active résumés are excluded from this calculation. A rate less than one indicates more job openings than in-state active résumés; a rate greater than one indicates more in-state active résumés than job openings.

**UNEMPLOYED PER JOB OPENING.** North Dakota's state-level and substate rates of unemployed per job opening are calculated by taking the number of unemployed persons from the Local Area Unemployment Statistics (LAUS) program and dividing by job openings. A rate less than one indicates more job openings than local labor supply; a rate greater than one indicates more local labor supply than job openings. North Dakota unemployment data typically lag one month, therefore the most recent rates will lag one month. The twelve-month moving average calculation is the average of the reference month plus the eleven most recent months.

## QUARTERLY CENSUS OF EMPLOYMENT AND WAGES (QCEW)

The Quarterly Census of Employment and Wages (QCEW) program produces quarterly and annual establishment, employment, and wage data by industry for North Dakota and its 53 counties by place of work. The source of the data is workers covered by state unemployment insurance (UI) laws and federal workers covered by the Unemployment Compensation for Federal Employees (UCFE) program, which covers an estimated 95 percent of all North Dakota workers. The QCEW program is a federal-state cooperative effort between the Job Service North Dakota Labor Market Information Center and the U.S. Department of Labor's Bureau of Labor Statistics (BLS). Under the cooperative agreement, the BLS is responsible for the concepts, definitions, technical procedures, validation, and publication of the data that the Job Service North Dakota Labor Market Information Center prepares. Data are subject to confidentiality restrictions.

**AVERAGE EMPLOYMENT.** A near-census count of employed persons during the reference week (week that includes the 12<sup>th</sup> of the month) whose employment is covered by North Dakota's unemployment insurance program. Generally excluded from coverage in North Dakota are the self-employed (farm and nonfarm sectors); farms that employ less than ten workers for less than 20 weeks in a calendar year; all railroad transportation employment; student workers; individuals working for religious organizations or church-related elementary and secondary schools; elected public officials at the federal, state, or local levels of government; and most domestic and private household workers. Data are extracted from quarterly contribution reports filed by employers. Employment represents a count of jobs rather than workers, counting jobs at the place of business. Multiple jobholders are counted for each job. The quarterly average is the average of three months of a calendar quarter. The four-quarter moving average calculation is the average of the reference quarter plus the three most recent quarters.

**AVERAGE WEEKLY WAGES.** Wages represent total compensation paid during the calendar quarter, regardless of when services were performed. Included in wages are pay for vacation and other paid leave, bonuses, stock options, tips, the cash value of meals and lodging, and in some states, contributions to deferred compensation plans (such as 401(k) plans). For quarterly data, average weekly wages are calculated by dividing the average quarterly wage by 13 (the standard number of weeks in a quarter). The four-quarter moving average calculation is the average of the reference quarter plus the three most recent quarters.

## QUARTERLY CENSUS OF EMPLOYMENT AND WAGES (QCEW) cont'd

**BUSINESS ESTABLISHMENTS.** A business establishment is defined as the smallest operating business unit for which information can be provided on the cost of resources, materials, labor, and capital employed to produce output. An establishment is generally a single, physical location where business is conducted or where services or industrial operations are performed (e.g. store, factory, farm, etc.). Business establishment counts are a unique count of worksites for a reference period (e.g. quarter or year). The four-quarter moving average calculation is the average of the reference quarter plus the three most recent quarters.

**TOTAL WAGES.** Total wages are the summation of all wages paid during a quarter (3-month period). The four-quarter rolling total calculation is the summation of the reference quarter plus the three most recent quarters.

## UNEMPLOYMENT INSURANCE STATISTICS

Unemployment insurance is a program for the accumulation of funds paid by employers to be used for the payment of unemployment insurance to workers during periods of unemployment which is beyond the worker's control. Unemployment insurance replaces a part of the worker's wage loss if he becomes eligible for payments and serves as an economic stabilizer by maintaining an individual's purchasing power when unemployed. The program covers more than 95 percent of employment in the state. Job Service North Dakota administers the state's unemployment insurance program.

**INITIAL JOBLESS CLAIMS.** An initial jobless claim is any notice of unemployment filed to request a determination of entitlement to and eligibility for unemployment compensation, or to begin a second or subsequent period of unemployment compensation within a benefit year period or eligibility. An initial jobless claim may or may not lead to actual unemployment compensation, but it can be a leading economic indicator of the relative strength or weakness of the labor market. The twelve-month moving average calculation is the average of the reference month plus the eleven most recent months.

## U.S. BUREAU OF ECONOMIC ANALYSIS (BEA)

**PER CAPITA PERSONAL INCOME.** Per capita personal income is the ratio of the measure of the residence-adjusted total personal income to population estimates. It is an arithmetic mean of personal income (usually expressed in dollars) per person.

## U.S. CENSUS BUREAU

**POPULATION.** The decennial population is the "official" population count tallied in conjunction with the national census conducted every ten years on April 1st. Years ending in '0' (e.g. 2000, 2010, etc.) denote decennial population counts; all other years are intercensal population estimates. Intercensal population estimates are the number of people living in an area as of a specified point in time, usually July 1st of any year. Intercensal population estimates are calculated using a component of change model that incorporates information on natural increase (births, deaths) and net migration (net domestic migration, net international migration) that has occurred in an area since the latest decennial census. Net international migration includes the international migration of both native and foreign-born populations. When new estimates are published, prior years may be revised. Race categories generally reflect a social definition of race recognized in this country and are not an attempt to define race biologically, anthropologically, or genetically. In addition, it is recognized that the race categories include racial and national origin or sociocultural groups. Ethnicity (e.g. Hispanic or Latino) can be viewed as the heritage, nationality group, lineage, or country of birth of the person or the person's parents or ancestors before their arrival in the United States. People who identify their origin as Hispanic or Latino may be of any race.

**MEDIAN AGE.** Median age divides the population into two equal-size groups. Half of the population is older than the median age and half is younger. It is rounded to the nearest tenth of a year. Median age is calculated based on single year of age.

**HOUSING UNITS.** The U.S. Census Bureau estimates the number of housing units for each year since the most recent decennial census. With each annual release of housing unit estimates, the entire time series of estimates beginning with April 1st is revised and updated. The estimates use building permits, estimates of non-permitted construction, mobile home shipments, and estimates of housing loss to estimate change in the housing stock. These component data come from various Census Bureau surveys.

**NEW RESIDENTIAL CONSTRUCTION (HOUSING UNITS).** The Building Permits Survey (BPS) is conducted by the U.S. Census Bureau and provides statistics on new residential construction of privately-owned housing units authorized by building permits. The statistics are based on reports that are submitted by local building permit officials in response to a voluntary mail survey. A residential housing unit is a house, an apartment, a group of rooms, or a single room intended for occupancy as separate living quarters. Separate living quarters are those in which the occupants live separately from any other individuals in the building and which have direct access from the outside of the building or through a common hall. Housing units exclude group quarters (dormitories, rooming houses, etc.), transient accommodations (transient hotels, motels, tourist courts, etc.), moved or relocated buildings, and housing units created in an existing residential or nonresidential structure. Units in assisted living facilities are considered to be housing units, however, units in nursing homes are not considered to be housing units.